

straightcurve®

Straightcurve® Garden Edging, Raised Garden Beds and Planter Boxes



Simply Better



Create curved lines easily
Notches allow unmatched flexibility

Start your creative journey!

Whether it's off a plan or off the cuff,
it's never been as easy as this.

Be bold, be stylish, be innovative,
be playful! Start your next creative
journey here.

Contents

INTRODUCTION

- ⊕ Solution types and finishes 4

STRAIGHTCURVE® GARDEN EDGING

- ⊕ Introducing the Straightcurve® ClickConnect™ Garden Edging system 7
- ⊕ Flex ClickConnect™ - 100mm 8
- ⊕ Rigid ClickConnect™ - 100mm 9
- ⊕ Flex ClickConnect™ - 150mm 10
- ⊕ Rigid ClickConnect™ - 150mm 11

- ⊕ Flex Original - 75mm 12
- ⊕ Zero-Flex Original - 75mm 13
- ⊕ Flex Original - 100mm 14
- ⊕ Rigid Original - 100mm 15
- ⊕ Zero-Flex Original - 100mm 16
- ⊕ Flex Original - 150mm 17
- ⊕ Rigid Original - 150mm 18
- ⊕ Zero-Flex Original - 150mm 19

STRAIGHTCURVE® RAISED GARDEN BEDS

- ⊕ Flex - 240mm 22
- ⊕ Rigid - 240mm 23
- ⊕ Flex - 400mm 24
- ⊕ Rigid - 400mm 25
- ⊕ Zero-Flex - 400mm 26
- ⊕ Flex - 560mm 27
- ⊕ Rigid - 560mm 28
- ⊕ Zero-Flex - 560mm 29

STRAIGHTCURVE® PLANTER BOXES

- ⊕ Planter Boxes - 400mm 33
- ⊕ Planter Boxes - 560mm 34

OUR DIFFERENCE

- ⊕ Why use Straightcurve® 37

ACCESSORIES

- ⊕ Support Systems 38



Decisions decisions... Straight or curved?

Deciding what you need or simply seeking inspiration? At some point there comes a time to choose if the lines in your garden will be straight or curving. The product range is designed to have solutions for both, so it's helpful to know just what you want!



STRAIGHT

The Straightcurve® Rigid range are suited for firm straight lines, with the Rigid Garden Edging lines also being capable of slight curves that offer plenty of strength to hold the gentlest curve.

Straightcurve® Zero-Flex products present different profiles that are all suited to making lasting, perfectly straight unmovable lines courtesy of their continuous top fold and grounding feet.



CURVED

The Straightcurve® Flex range is great for organic and flowing lines. As they flex rather than bend you can make all curves effortlessly by hand on site as you go, it comes naturally!



COMBINATIONS

It's OK to have some of each in a garden too. Our Rigid products are join compatible with our Flex products of the same height, while the Zero-Flex with thoughtful design can integrate well with the other ranges.

Finish choices

The entire Straightcurve® range is available in a weathering steel or galvanised finish. Perfect for whatever look you are going for!



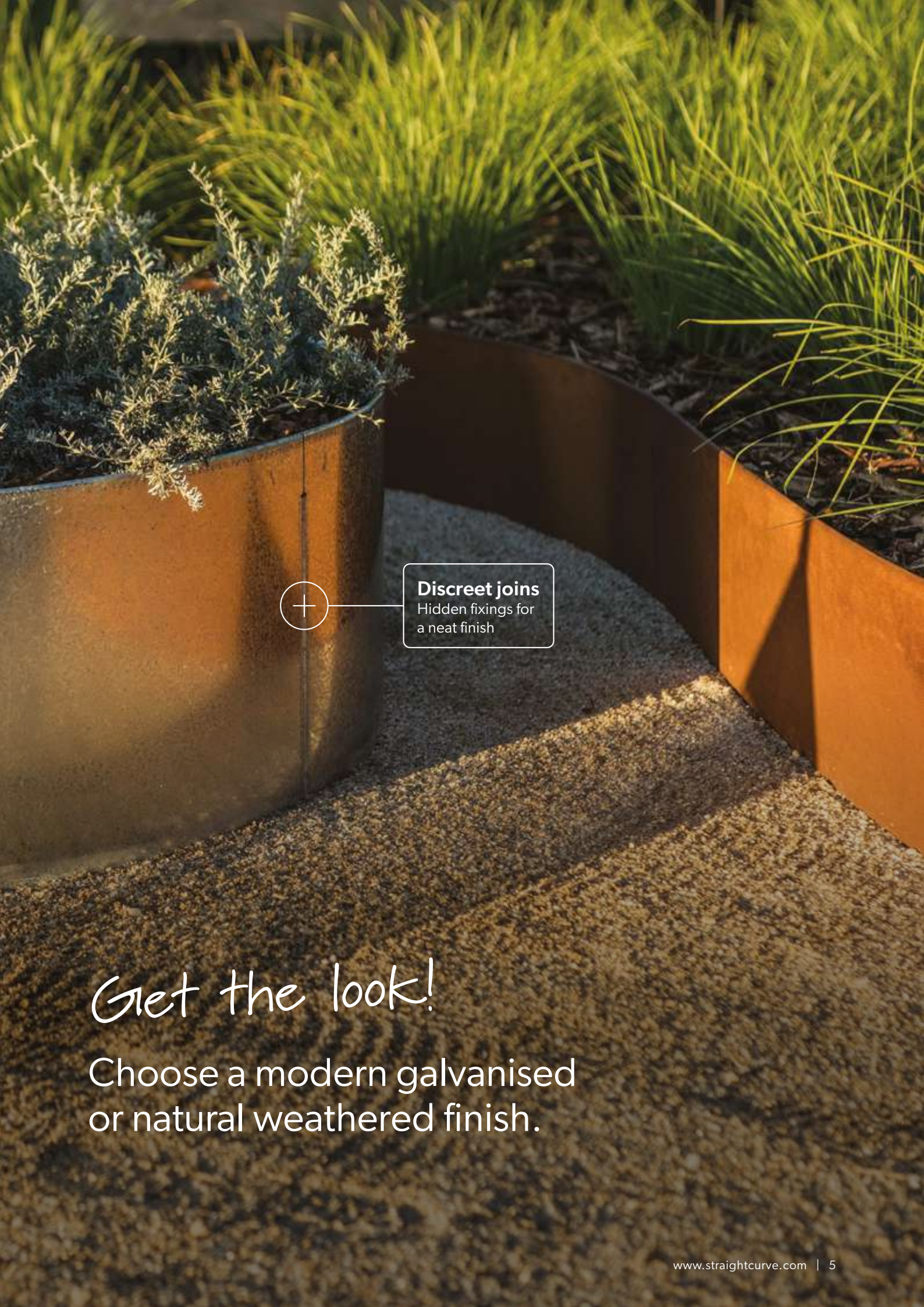
WEATHERING STEEL

Weathering steel is an alloy that develops a rusty-looking protective patina, giving a natural finish.



GALVANISED STEEL

The galvanised look is for people who prefer a grey/silver finish and is longer lasting.



Discreet joins
Hidden fixings for
a neat finish

Get the look!

Choose a modern galvanised
or natural weathered finish.

straightcurve®

Garden Edging

Perfect for!

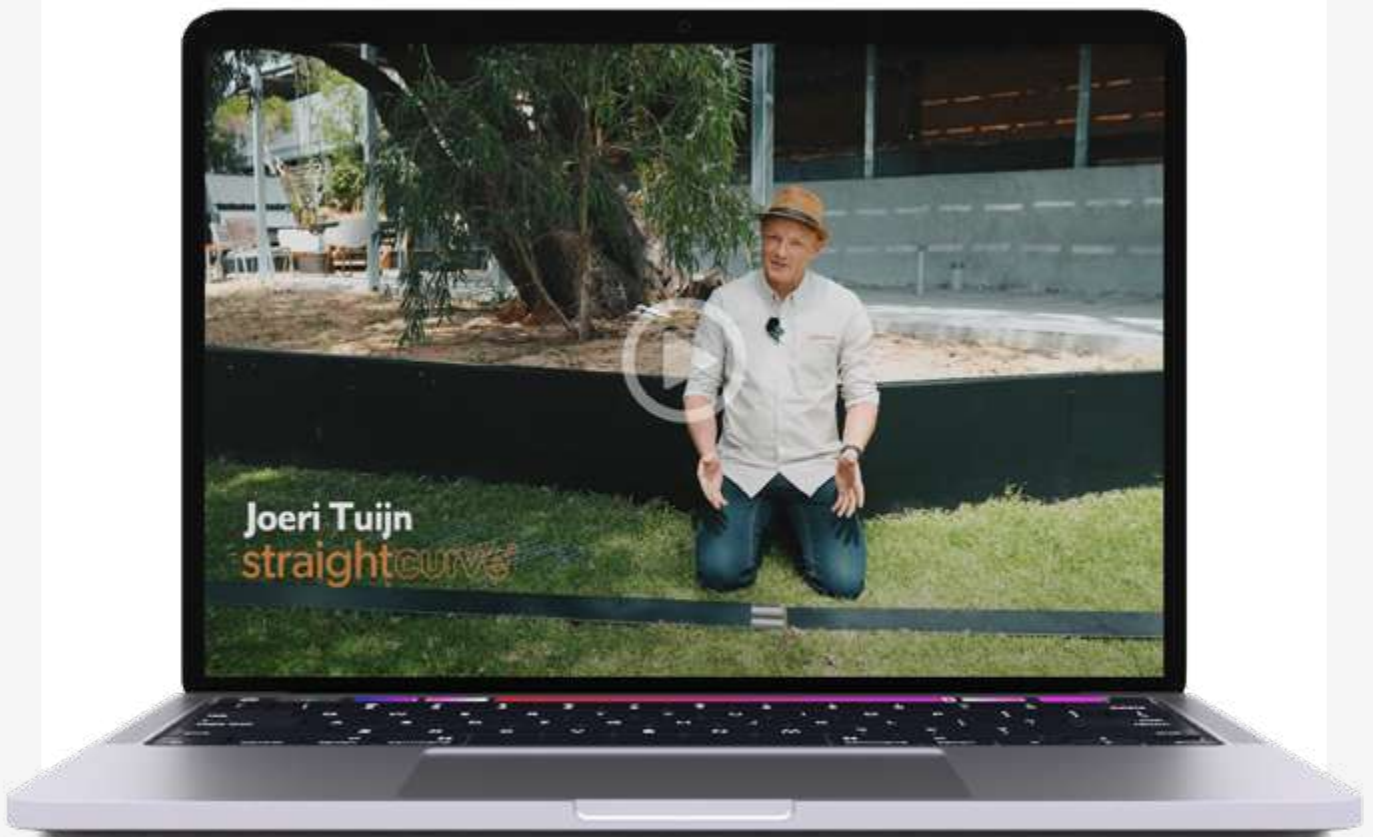
- ✓ Lawn barriers
- ✓ Pathway edges
- ✓ Separating materials like stone and mulch



INTRODUCING

ClickConnect™

The fastest garden edging system in the world!*



Securely connect steel garden edging, in seconds, without power tools or tek screws.



*Based on field testing with landscape professionals.

or scan me for more info!



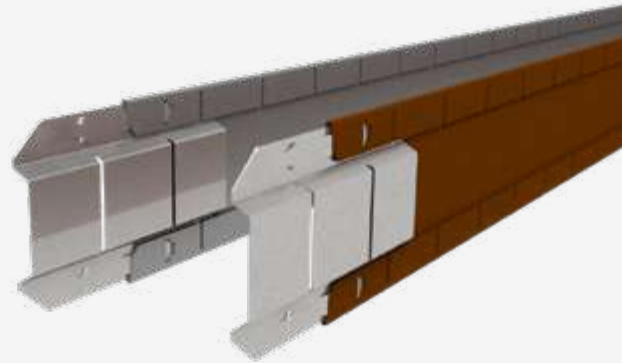
Straightcurve® Garden Edging



Straightcurve® Flex ClickConnect™ - 100 mm x 1800 mm

IDEAL FOR

- ✔ Fastest edge joining and installation
- ✔ Firmest hold in all soil types
- ✔ Meandering garden paths and curved lawn areas
- ✔ Surrounding feature trees and garden beds
- ✔ Separating areas of stone/woodchips/mulch etc
- ✔ Retrofits and hard ground where trenching is not easy



FL100WS-1800 WEATHERING STEEL
FL100GS-1800 GALVANISED STEEL



All specifications and installation
instructions can also be found here:
www.straightcurve.info/500

*or scan me
for more info!*

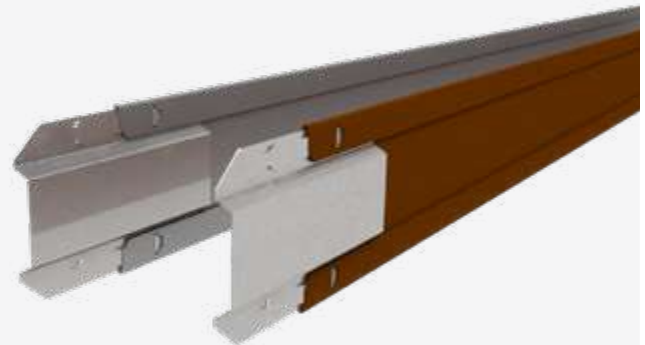




Straightcurve® Rigid ClickConnect™ - 100 mm x 1800 mm

IDEAL FOR

- ✔ Fastest edge joining and installation
- ✔ Firmest hold in all soil types
- ✔ Straight garden paths and straight lawn areas
- ✔ Linear surrounds of feature trees and garden beds
- ✔ Separating areas of stone / woodchips / mulch etc
- ✔ Retrofits and hard ground where trenching is not easy



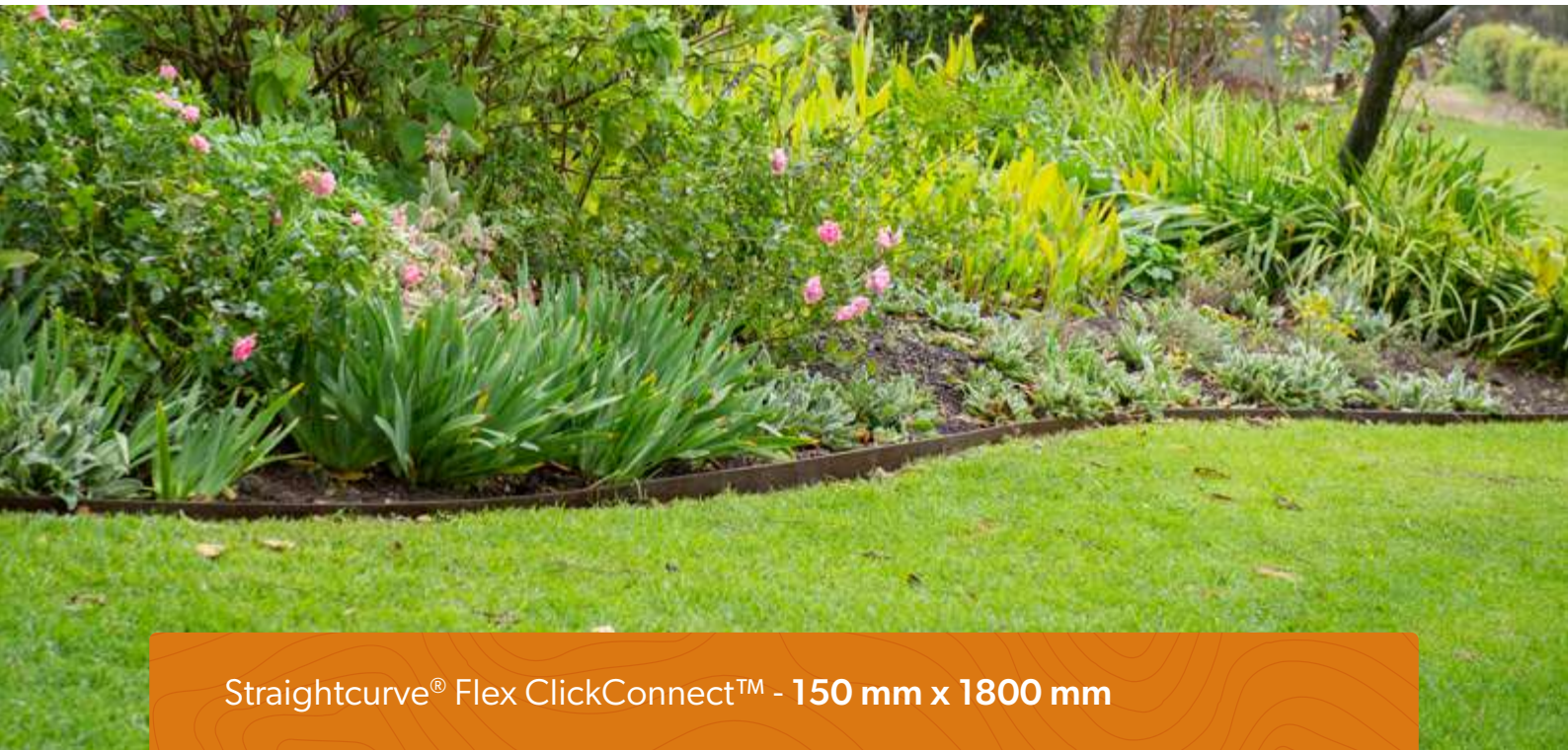
RL100WS-1800 WEATHERING STEEL
RL100GS-1800 GALVANISED STEEL

All specifications and installation
instructions can also be found here:
www.straightcurve.info/501

*or scan me
for more info!*



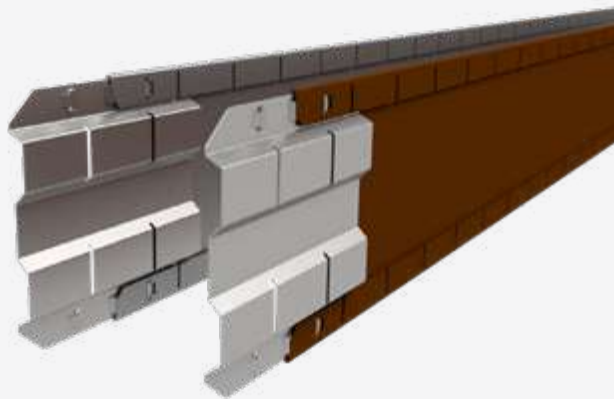
Straightcurve® Garden Edging



Straightcurve® Flex ClickConnect™ - 150 mm x 1800 mm

IDEAL FOR

- ✔ Fastest edge joining and installation
- ✔ Firmest hold in all soil types
- ✔ Meandering garden paths and curved lawn areas
- ✔ As a barrier for invasive grasses and groundcovers
- ✔ Surrounding feature trees and garden beds
- ✔ Retrofits and new ground or easy-dig installations
- ✔ Showing a little more edge by setting higher

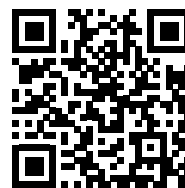


FL150WS-1800 WEATHERING STEEL
FL150GS-1800 GALVANISED STEEL



All specifications and installation
instructions can also be found here:
www.straightcurve.info/502

*or scan me
for more
info!*

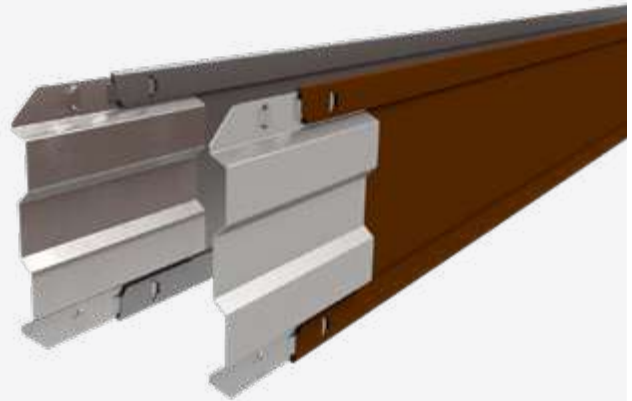




Straightcurve® Rigid ClickConnect™ - 150 mm x 1800 mm

IDEAL FOR

- ✓ Fastest edge joining and installation
- ✓ Firmest hold in all soil types
- ✓ Straight garden paths and straight lawn areas
- ✓ As a barrier for invasive grasses and groundcovers
- ✓ Linear surrounds of feature trees and garden beds
- ✓ Retrofits and new ground or easy-dig installations
- ✓ Showing a little more edge by setting higher



RL150WS-1800 WEATHERING STEEL
RL150GS-1800 GALVANISED STEEL



All specifications and installation
instructions can also be found here:
www.straightcurve.info/503

*or scan me
for more info!*



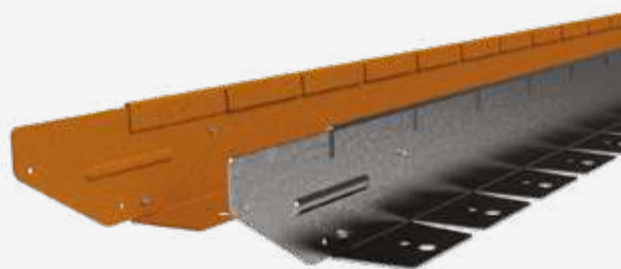
Straightcurve® Garden Edging



Straightcurve® Flex Original - 75 mm x 2200 mm

IDEAL FOR

- ✔ Meandering garden paths and curved lawn areas
- ✔ Surrounding feature trees and garden beds
- ✔ Separating areas of stone/woodchips/mulch etc
- ✔ Paving, compacted stone and artificial turf edging
- ✔ Harder ground installations



FL075WS WEATHERING STEEL
FL075GS GALVANISED STEEL



All specifications and installation
instructions can also be found here:
www.straightcurve.info/039

*or scan me
for more
info!*





Straightcurve® Zero-Flex Original - 75 mm x 2200 mm

IDEAL FOR

- ✔ Straight garden paths and straight lawn areas
- ✔ Linear surrounds of feature trees and garden beds
- ✔ Separating areas of stone /woodchips/mulch etc
- ✔ Paving, compacted stone and artificial turf edging
- ✔ Harder ground installations



RL075WS WEATHERING STEEL
RL075GS GALVANISED STEEL

—
All specifications and installation instructions can also be found here:
www.straightcurve.info/040

or scan me for more info!



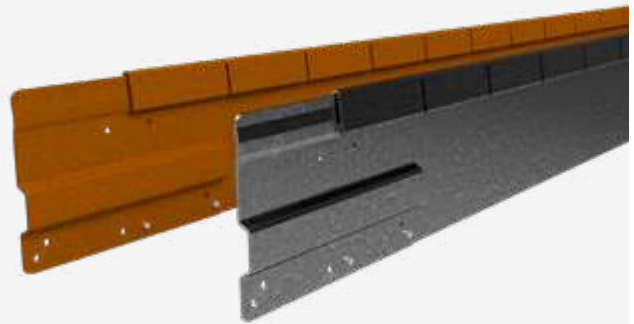
Straightcurve® Garden Edging



Straightcurve® Flex Original - 100 mm x 2200 mm

IDEAL FOR

- ✔ Meandering garden paths and curved lawn areas
- ✔ Surrounding feature trees and garden beds
- ✔ Separating areas of stone/woodchips/mulch etc
- ✔ Retrofits and hard ground where trenching is not easy

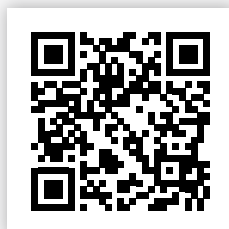


FL100WS WEATHERING STEEL
FL100GS GALVANISED STEEL



All specifications and installation
instructions can also be found here:
www.straightcurve.info/041

or scan me
for more info!

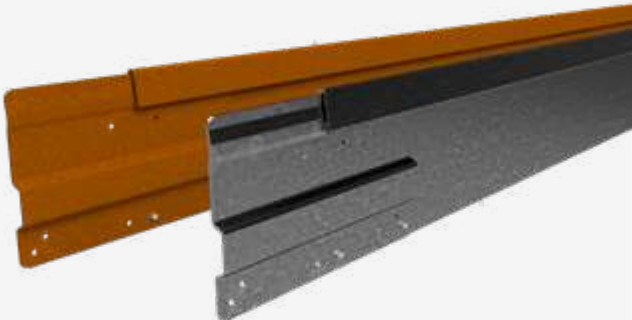




Straightcurve® Rigid Original - 100 mm x 2200 mm

IDEAL FOR

- ✔ Straight garden paths and straight lawn areas
- ✔ Linear surrounds of feature trees and garden beds
- ✔ Separating areas of stone / woodchips / mulch etc
- ✔ Retrofits and hard ground where trenching is not easy



RL100WS WEATHERING STEEL
RL100GS GALVANISED STEEL

—
All specifications and installation instructions can also be found here:
www.straightcurve.info/042

or scan me for more info!



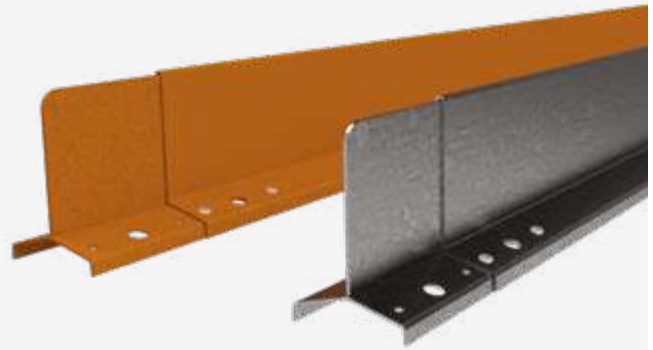
Straightcurve® Garden Edging



Straightcurve® Zero-Flex Original - 100 mm x 2200 mm

IDEAL FOR

- ✔ Designs requiring perfect straight lines that stay true
- ✔ Neat, formal and orderly courtyard gardens
- ✔ Linear tree surrounds and garden beds
- ✔ Discreet Divider between gravels/woodchips/mulch etc
- ✔ Lock in paving or compacted/loose fill paths



HL100WS WEATHERING STEEL
HL100GS GALVANISED STEEL

—
All specifications and installation
instructions can also be found here:
www.straightcurve.info/045

*or scan me
for more info!*

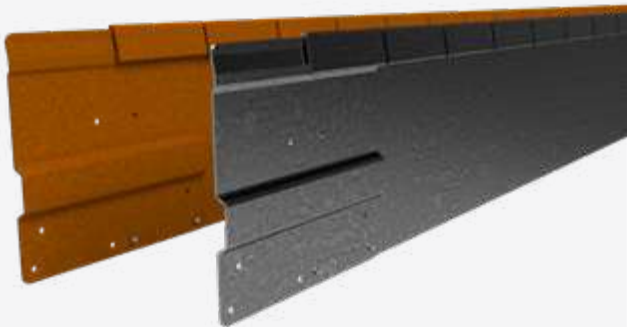




Straightcurve® Flex Original - 150 mm x 2200 mm

IDEAL FOR

- ✔ Meandering garden paths and curved lawn areas
- ✔ As a barrier for invasive grasses and groundcovers
- ✔ Surrounding feature trees and garden beds
- ✔ Retrofits and new ground or easy dig installations
- ✔ Showing a little more edge by setting higher

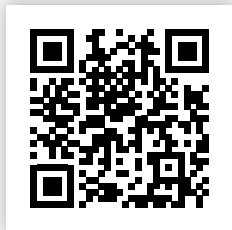


FL150WS WEATHERING STEEL
FL150GS GALVANISED STEEL



All specifications and installation instructions can also be found here:
www.straightcurve.info/043

or scan me for more info!



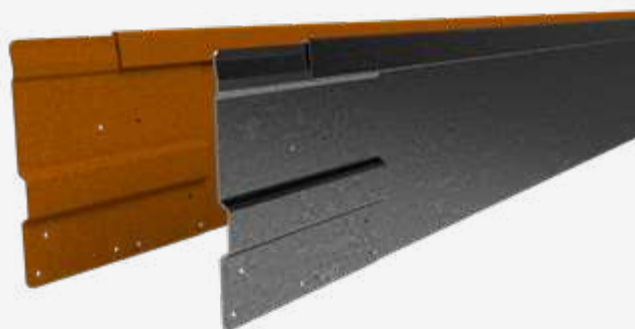
Straightcurve® Garden Edging



Straightcurve® Rigid Original - 150 mm x 2200 mm

IDEAL FOR

- ✔ Straight garden paths and straight lawn areas
- ✔ As a barrier for invasive grasses and groundcovers
- ✔ Linear surrounds of feature trees and garden beds
- ✔ Retrofits and new ground or easy dig installations
- ✔ Showing a little more edge by setting higher



RL150WS WEATHERING STEEL
RL150GS GALVANISED STEEL

All specifications and installation
instructions can also be found here:
www.straightcurve.info/044

*or scan me
for more info!*

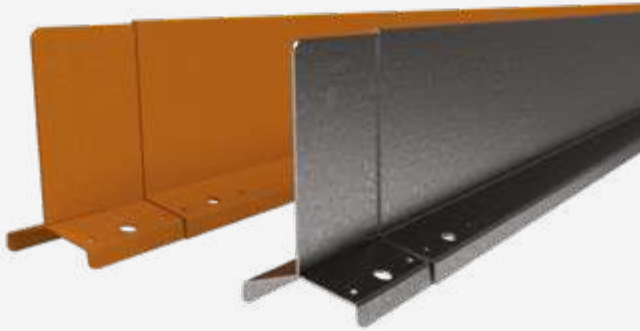




Straightcurve® Zero-Flex Original - 150 mm x 2200 mm

IDEAL FOR

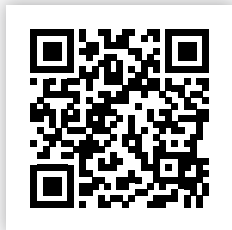
- ✔ Designs requiring perfect straight lines that stay true
- ✔ Neat, formal and orderly courtyard gardens
- ✔ As a barrier for invasive grasses and groundcovers
- ✔ Linear tree surrounds and garden beds
- ✔ Divider between gravels/woodchips/mulch etc
- ✔ Showing a little more edge by setting higher



HL150WS WEATHERING STEEL
HL150GS GALVANISED STEEL

—
All specifications and installation instructions can also be found here:
www.straightcurve.info/046

or scan me for more info!





Designed for DIY
Easy to install with no experience



Premium quality!

Suitable for soft, hard
or concrete surfaces.

straightcurve®

Raised Garden Beds

Perfect for!

- ✓ Raised Garden Beds
- ✓ Path Step Ups & Retaining
- ✓ Lawn edging



Straightcurve[®] Raised Garden Beds



Straightcurve[®] Flex - 240 mm x 2160 mm

IDEAL FOR

- ✔ Slightly raised and curving garden bed borders
- ✔ Slightly raised closed shape feature beds
- ✔ Feature tiered lawn areas within a garden
- ✔ Terraces and retaining across gentle slopes
- ✔ Hard surface mounting i.e. rooftops/decking



*Requires bracing accessories.
Ask your stockist about available bracing options.

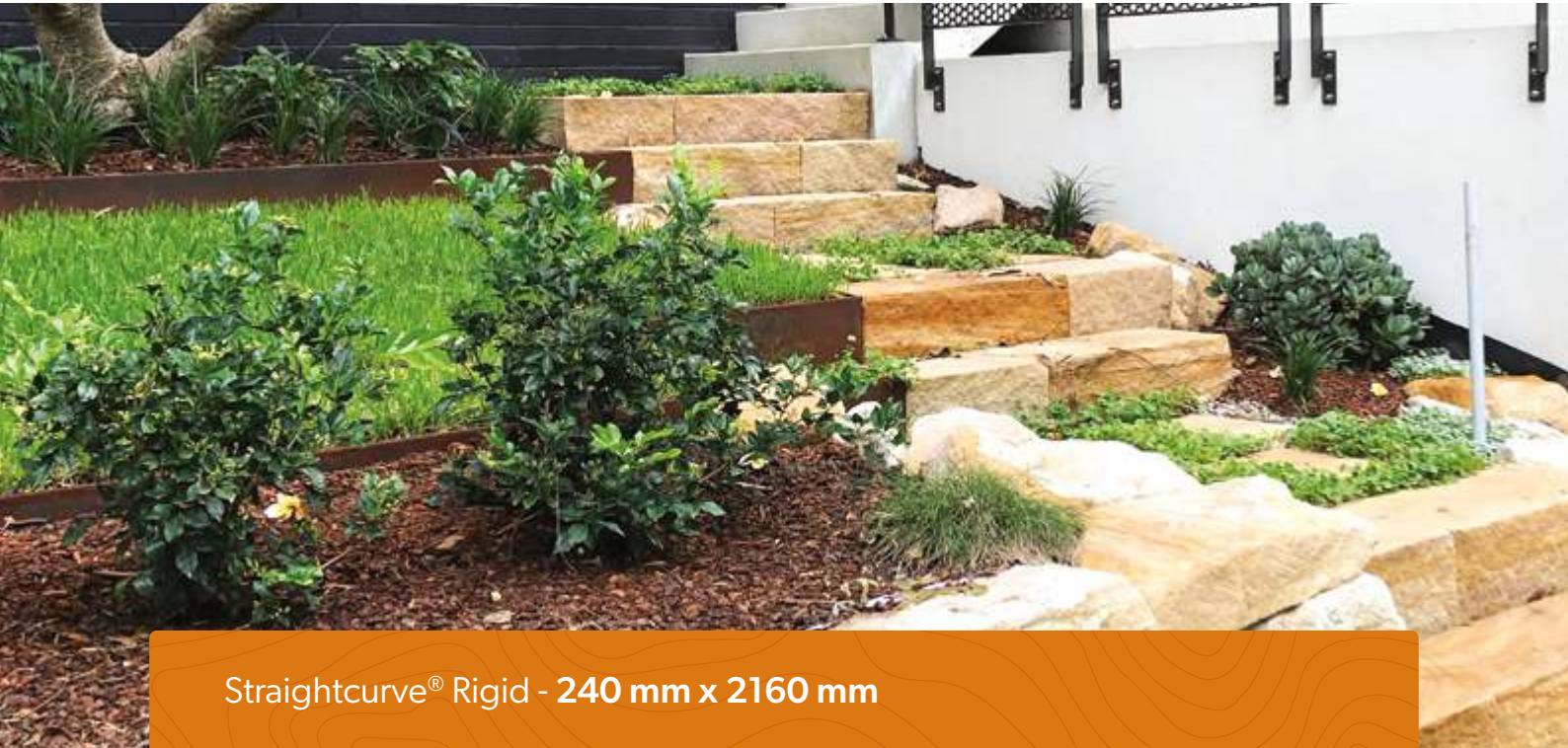
FL240WS WEATHERING STEEL
FL240GS GALVANISED STEEL



All specifications and installation
instructions can also be found here:
www.straightcurve.info/047

or scan me
for more info!





Straightcurve® Rigid - 240 mm x 2160 mm

IDEAL FOR

- ✔ Slightly raised, straight garden bed borders
- ✔ Slightly raised, closed shape feature beds
- ✔ Path steps and retaining across gentle slopes
- ✔ Lawn edges that stand taller or are buried deeper
- ✔ Hard surface mounting i.e. rooftops/decking

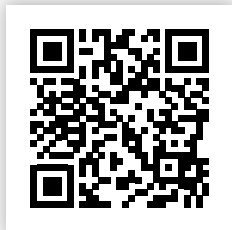


*Requires bracing accessories.
Ask your stockist about available bracing options.

RL240WS WEATHERING STEEL
RL240GS GALVANISED STEEL

All specifications and installation instructions can also be found here:
www.straightcurve.info/048

or scan me for more info!



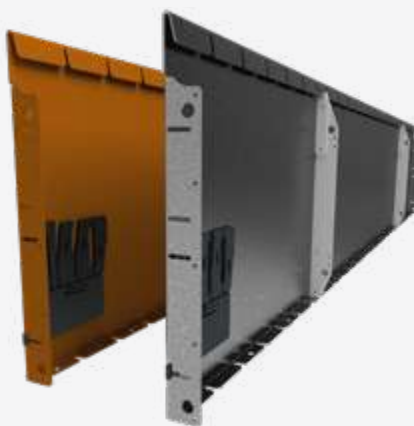
Straightcurve® Raised Garden Beds



Straightcurve® Flex - 400 mm x 2160 mm

IDEAL FOR

- ✔ Raised and curving garden bed borders
- ✔ Raised closed shape feature beds and kitchen gardens
- ✔ Feature tiered lawn areas within a garden
- ✔ Terraces and retaining across gentle slopes
- ✔ Hard surface mounting i.e. rooftops/decking



*Requires bracing accessories.
Ask your stockist about available bracing options.

FL400WS WEATHERING STEEL
FL400GS GALVANISED STEEL



All specifications and installation
instructions can also be found here:
www.straightcurve.info/049

*or scan me
for more info!*

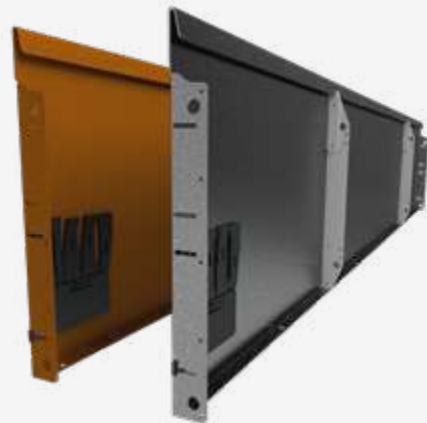




Straightcurve® Rigid - 400 mm x 2160 mm

IDEAL FOR

- ✓ Raised, straight garden bed borders
- ✓ Raised, closed shape feature beds and kitchen gardens
- ✓ Feature tiered lawn areas within a garden
- ✓ Terraces and retaining across gentle slopes
- ✓ Hard surface mounting i.e. rooftops/decking



*Requires bracing accessories.
Ask your stockist about available bracing options.

RL400WS WEATHERING STEEL
RL400GS GALVANISED STEEL

All specifications and installation
instructions can also be found here:
www.straightcurve.info/050

*or scan me
for more info!*



Straightcurve[®] Raised Garden Beds



Straightcurve[®] Zero-Flex - 400 mm

IDEAL FOR

- ✔ Designs requiring perfect straight lines and corners
- ✔ Raised, straight-sided feature beds and kitchen gardens
- ✔ Terracing and retaining across gentle slopes
- ✔ Narrow free-standing raised garden beds
- ✔ An extra large custom made planter box look
- ✔ Hard surface mounting i.e. rooftops/decking

AVAILABLE PANEL LENGTHS

400MM	600MM	800MM	1000MM	1200MM	2000MM
-------	-------	-------	--------	--------	--------

Combine panels to make any size in 200mm increments

*Requires bracing accessories.

Ask your stockist about available bracing options.



FHL400WS WEATHERING STEEL
FHL400GS GALVANISED STEEL

All specifications and installation instructions can also be found here:
www.straightcurve.info/189

or scan me for more info!



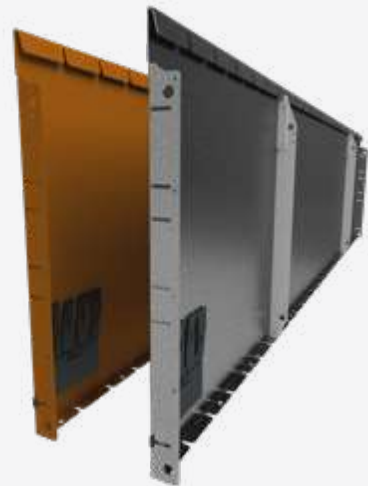


Straightcurve® Flex - 560 mm x 2160 mm

IDEAL FOR

- ✔ Tall and curving garden bed borders
- ✔ Tall closed shape feature beds and kitchen gardens
- ✔ Feature tiered lawn areas within a garden
- ✔ Terraces and retaining across gentle slopes
- ✔ Hard surface mounting i.e. rooftops/decking

*Requires bracing accessories.
Ask your stockist about available bracing options.



FL560WS WEATHERING STEEL
FL560GS GALVANISED STEEL



All specifications and installation
instructions can also be found here:
www.straightcurve.info/051

*or scan me
for more info!*



Straightcurve® Raised Garden Beds



Straightcurve® Rigid - 560 mm x 2160 mm

IDEAL FOR

- ✔ Tall, straight garden bed borders
- ✔ Tall, closed shape feature beds and kitchen gardens
- ✔ Feature tiered lawn areas within a garden
- ✔ Terraces and retaining across gentle slopes
- ✔ Hard surface mounting i.e. rooftops/decking

*Requires bracing accessories.
Ask your stockist about available bracing options.



RL560WS WEATHERING STEEL
RL560GS GALVANISED STEEL

All specifications and installation
instructions can also be found here:
www.straightcurve.info/052

*or scan me
for more info!*





Straightcurve® Zero-Flex - 560 mm

IDEAL FOR

- ✔ Designs requiring perfect straight lines and corners
- ✔ Tall, straight-sided feature beds and kitchen gardens
- ✔ Terracing and retaining across gentle slopes
- ✔ Narrow free-standing raised garden beds
- ✔ An extra large custom made planter box look
- ✔ Hard surface mounting i.e. rooftops/decking

AVAILABLE PANEL LENGTHS

400MM	600MM	800MM	1000MM	1200MM	2000MM
-------	-------	-------	--------	--------	--------

Combine panels to make any size in 200mm increments

*Requires bracing accessories.
Ask your stockist about available bracing options.

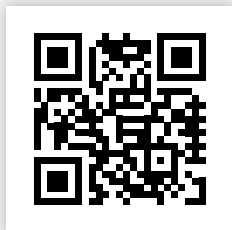



FHL560WS WEATHERING STEEL
FHL560GS GALVANISED STEEL



All specifications and installation instructions can also be found here:
www.straightcurve.info/190

or scan me for more info!






Smooth, squared top
with rounded edges

Step up a level!

Catch the eye of passers by
with a little elevation.



Quick to install

Designed with time-saving features

velvæen

Stunning presentation

Neat and attractive finish, gorgeous
seam lines and hidden fixings.

Planter Boxes

Perfect for!

- ✓ A stylish planter box finish
- ✓ Easy-build custom planters for bespoke designs
- ✓ Something that feels strong and lasts



Straightcurve® Planter Boxes

Hidden fixings with free-standing or bolt down capabilities



Straightcurve® Planter Box Kit or Panel - 400 mm

IDEAL FOR

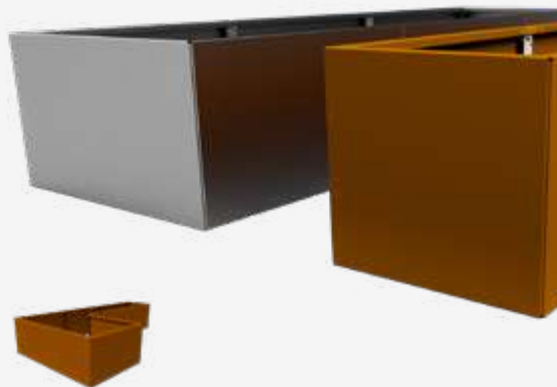
- ✔ Square and rectangular planters
- ✔ L and U and other funky shaped planter boxes
- ✔ Custom made planter boxes for particular situations
- ✔ Bases for seats and tables
- ✔ Free standing planter boxes on rooftops or hard surface areas
- ✔ Hard surface mounting i.e. rooftops/decking
- ✔ Difficult to access sites - flat packed for easier delivery

AVAILABLE PANEL LENGTHS

400MM	600MM	800MM	1000MM	1200MM
-------	-------	-------	--------	--------

Combine panels to make any size in 200mm increments

*Requires bracing accessories.
Ask your stockist about available bracing options.



FHL400WS WEATHERING STEEL
FHL400GS GALVANISED STEEL

All specifications and installation
instructions can also be found here:
www.straightcurve.info/191

or scan me
for more info!



Straightcurve® Planter Boxes

Hidden fixings with free-standing or bolt down capabilities



Straightcurve® Planter Box Kit or Panel - 560 mm

IDEAL FOR

- ✓ Square and rectangular planters
- ✓ L and U and other funky shaped planter boxes
- ✓ Custom made planter boxes for particular situations
- ✓ Free standing planter boxes on rooftops or hard surface areas
- ✓ Hard surface mounting i.e. rooftops/decking
- ✓ Difficult to access sites - flat packed for easier delivery

AVAILABLE PANEL LENGTHS

400MM	600MM	800MM	1000MM	1200MM
-------	-------	-------	--------	--------

Combine panels to make any size in 200mm increments

*Requires bracing accessories.

Ask your stockist about available bracing options.



FHL560WS WEATHERING STEEL
FHL560GS GALVANISED STEEL

All specifications and installation
instructions can also be found here:
www.straightcurve.info/192

or scan me
for more info!



How does it look?

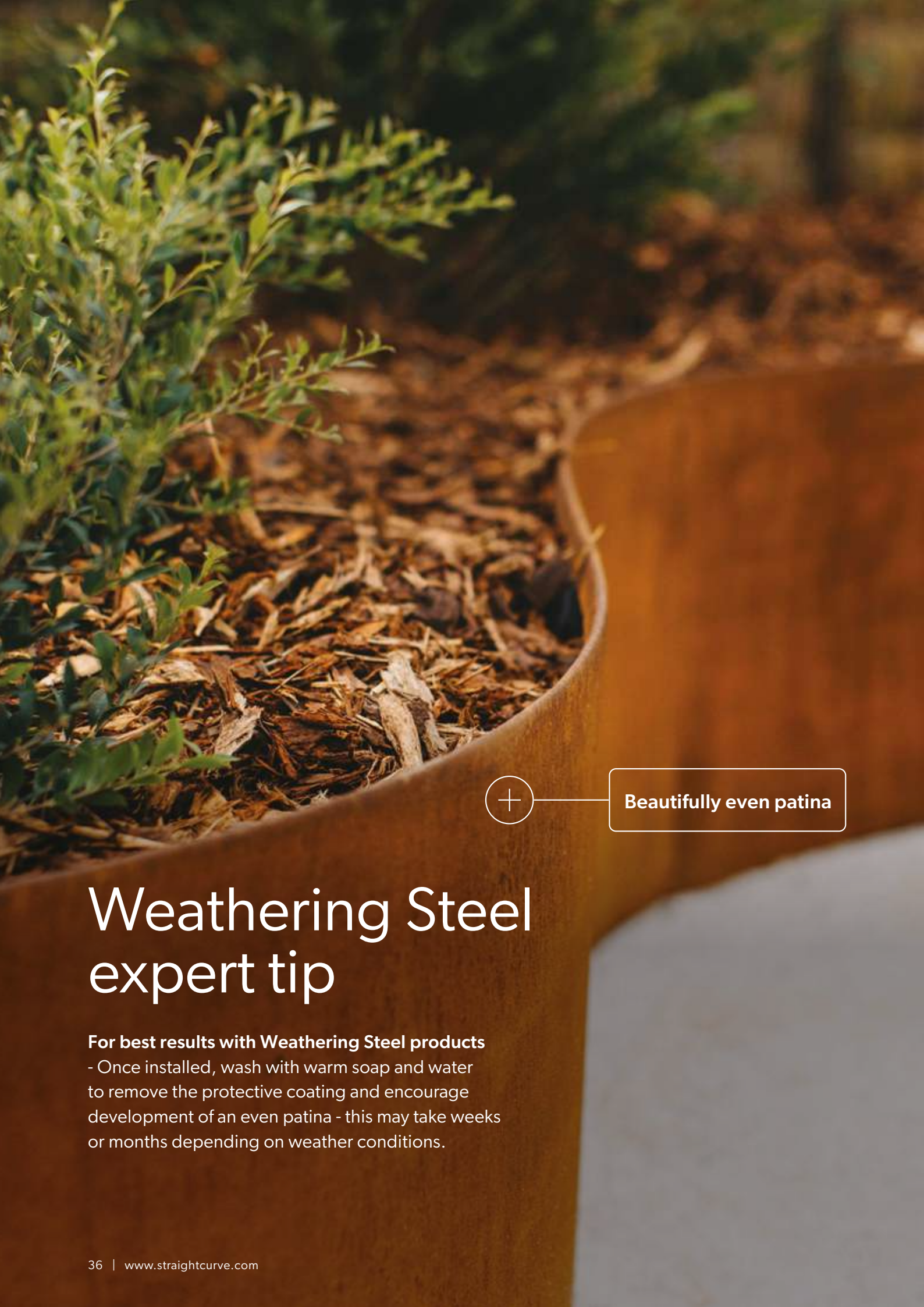
Our weathering steel products will arrive mostly dark coloured, don't worry, that's completely normal!

How it comes



What it turns into

NB: It takes some time for the patina to develop once the metal is exposed to the elements.



Beautifully even patina

Weathering Steel expert tip

For best results with Weathering Steel products

- Once installed, wash with warm soap and water to remove the protective coating and encourage development of an even patina - this may take weeks or months depending on weather conditions.

Child & animal friendly

Rolled tops and internal fixings
for added safety



Why use Straightcurve[®]?

"Once we'd connected the lengths, seeing it on the ground allowed us to adjust the curves just right. It really did flex into shape naturally."

"It's definitely DIY friendly, I'm no landscaper but when my Mum visited, she asked what landscaping company I used. Not bad hey?"

"Often people say things are easy when they aren't, but this was truly easy."

"The Zero-Flex is amazing, what a perfect solution for when we need it straight. That used to cause us a lot of headaches, we appreciate the quality finish it gives us."

"I've worked with plenty of steel edging but knocking it out in a third of the time makes a huge difference for our business, and I don't miss the welding equipment at all!"

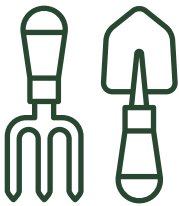


Support systems

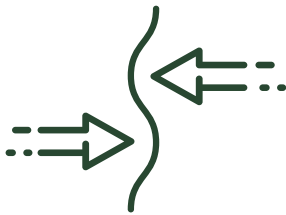
	Support	Compatibility	Suitability
	Universal Bracing Set (1 brace per set)	240mm, 400mm and 560mm Flex, Rigid and Zero-Flex Planters	Soft, firm and hard ground
	Ground Anchor Post 470mm	240mm Flex and Rigid	Soft and firm ground
	Ground Anchor Post 1100mm	400mm and 560mm Flex and Rigid	Firm and hard ground
	Ground anchor post 1100mm & fitting set (sold separate to post)	Zero-Flex Planters	Firm and hard ground

Configurations	Number of supports recommended (per 2160mm length)
Tight rings using 2 lengths	0
Closed shapes and strong curves	2
Gentle curves and straight lines	3

Landscaper & DIY user benefits



DESIGNED FOR DIY



NATURALLY FLEXIBLE, EASY TO CURVE



STRAIGHT LINES STAY TRUE



DISCREET, NEAT JOINING



QUICK TO INSTALL



SMOOTH ROLLED TOP EDGES

GREAT BENEFITS

- ✔ Easy and quick installation
- ✔ Durable and strong – won't crack, warp or shift later
- ✔ No need to concrete edges in place
- ✔ Each connection is always right
- ✔ Easy combinations of rigid and flex garden edges
- ✔ No welding required
- ✔ Suitable for soft, hard or concrete surfaces
- ✔ Products made for straight lines and curves
- ✔ Sold in sets with stakes and connectors.
- ✔ Natural looking finish

Simply Better

straightcurve®

Australian Distribution Partner:
Straightcurve Australia Pty Ltd
1300 943 667
assistance@straightcurve.com.au

Distributor:

www.straightcurve.com