

straightcurve®

# Straightcurve® Garden Edging, Raised Garden Beds and Planter Boxes



Simply Better





**Create curved lines easily**  
Notches allow unmatched flexibility

*Start your creative journey!*

Whether it's off a plan or off the cuff,  
it's never been as easy as this.  
Be bold, be stylish, be innovative,  
be playful! Start your next creative  
journey here.

# Contents

## INTRODUCTION

- ⊕ Solution types and finishes 4

## STRAIGHTCURVE® GARDEN EDGING

- ⊕ Flex Garden Edging - 75mm 8
- ⊕ Zero-Flex Garden Edging - 75mm 9
- ⊕ Flex Garden Edging - 100mm 10
- ⊕ Rigid Garden Edging - 100mm 11
- ⊕ Zero-Flex Garden Edging - 100mm 12

## STRAIGHTCURVE® RAISED GARDEN BEDS

- ⊕ Flex Raised Garden Beds - 240mm 14
- ⊕ Rigid Raised Garden Beds - 240mm 15
- ⊕ Flex Raised Garden Beds - 400mm 16
- ⊕ Rigid Raised Garden Beds - 400mm 17
- ⊕ Zero-Flex Raised Garden Beds - 400mm 18
- ⊕ Flex Raised Garden Beds - 560mm 20
- ⊕ Rigid Raised Garden Beds - 560mm 21

## STRAIGHTCURVE® PLANTER BOXES

- ⊕ Planter Boxes - 400mm 24

## OUR DIFFERENCE

- ⊕ Why use Straightcurve® 26





# Decisions decisions... Straight or curved?

Deciding what you need or simply seeking inspiration? At some point there comes a time to choose if the lines in your garden will be straight or curving. The product range is designed to have solutions for both, so it's helpful to know just what you want!



## STRAIGHT

The Straightcurve® Rigid range are suited for firm straight lines, with the Rigid Garden Edging lines also being capable of slight curves that offer plenty of strength to hold the gentlest curve.

Straightcurve® Zero-Flex products present different profiles that are all suited to making lasting, perfectly straight unmovable lines courtesy of their continuous top fold and grounding feet.



## CURVED

The Straightcurve® Flex range is great for organic and flowing lines. As they flex rather than bend you can make all curves effortlessly by hand on site as you go, it comes naturally!



## COMBINATIONS

It's OK to have some of each in a garden too. Our Rigid products are join compatible with our Flex products of the same height, while the Zero-Flex with thoughtful design can integrate well with the other ranges.

# Finish choices

The entire Straightcurve® range is available in a weathering steel or galvanised finish. Perfect for whatever look you are going for!



## WEATHERING STEEL

Weathering steel is an alloy that develops a rusty-looking protective patina, giving a natural finish.

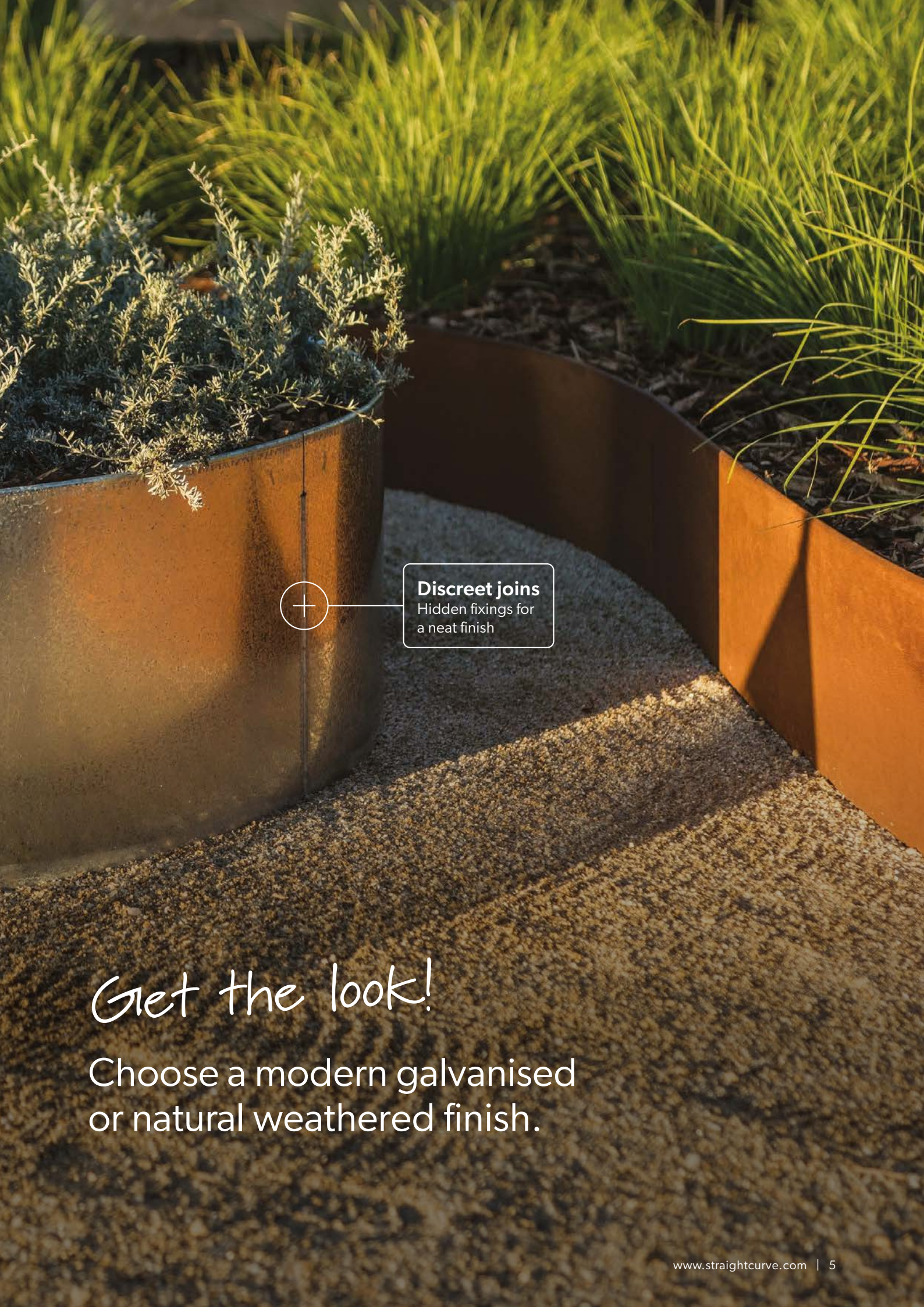


## GALVANISED STEEL

The galvanised look is for people who prefer a grey/silver finish and is longer lasting.

ON THE WAY TO THE UK WAREHOUSE IN 2023





**Discreet joins**  
Hidden fixings for  
a neat finish

Get the look!

Choose a modern galvanised  
or natural weathered finish.





**Straight lines stay true**  
Stabilising foot prevents movement

*Got to keep them separated!*

Use the Zero-Flex range for strong straight lines that stay true over time.



straightcurve®

# Garden Edging

*Perfect for!*

- ✓ Lawn barriers
- ✓ Pathway edges
- ✓ Separating materials like stone and mulch



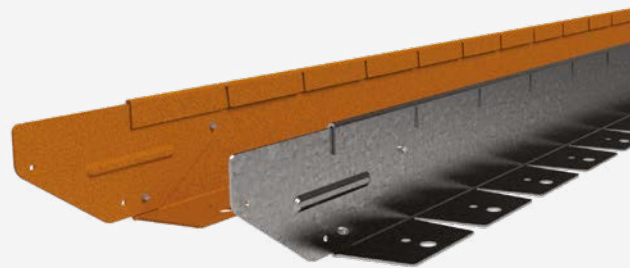
# Garden Edging Range



## 75mm high x 2200mm Straightcurve® Flex Garden Edging

### IDEAL FOR

- ✔ Meandering garden paths and curved lawn areas
- ✔ Surrounding feature trees and garden beds
- ✔ Separating areas of stone/woodchips/mulch etc
- ✔ Paving, compacted stone and artificial turf edging
- ✔ Harder ground installations



FL075WS WEATHERING STEEL  
FL075GS GALVANISED STEEL



All specifications and installation instructions can also be found here:  
[www.straightcurve.info/165](http://www.straightcurve.info/165)

Download here!



MORE INFO & INSTALL GUIDE



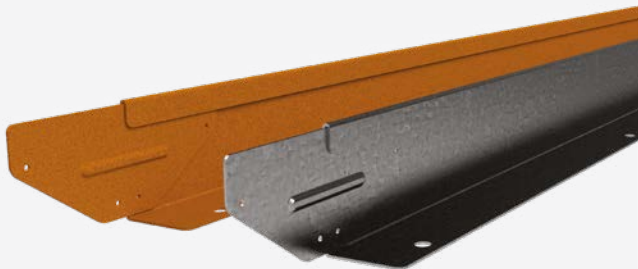




**75mm high x 2200mm Straightcurve® Zero-Flex Garden Edging**

**IDEAL FOR**

- ✔ Straight garden paths and straight lawn areas
- ✔ Linear surrounds of feature trees and garden beds
- ✔ Separating areas of stone /woodchips/mulch etc
- ✔ Paving, compacted stone and artificial turf edging
- ✔ Harder ground installations



**RL075WS WEATHERING STEEL**  
**RL075GS GALVANISED STEEL**

—  
All specifications and installation instructions can also be found here:  
[www.straightcurve.info/166](http://www.straightcurve.info/166)

*Download here!*



**MORE INFO & INSTALL GUIDE**





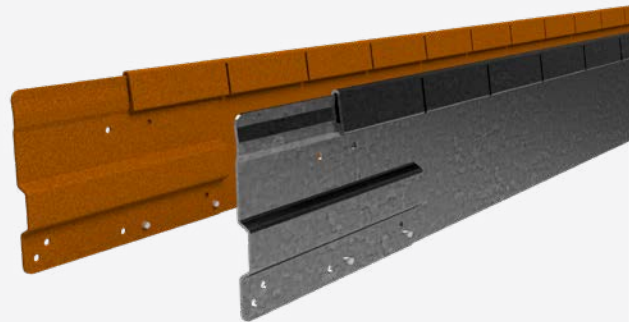
# Garden Edging Range



## 100mm high x 2200mm Straightcurve® Flex Garden Edging

### IDEAL FOR

- ✔ Meandering garden paths and curved lawn areas
- ✔ Surrounding feature trees and garden beds
- ✔ Separating areas of stone/woodchips/mulch etc
- ✔ Retrofits and hard ground where trenching is not easy



FL100WS WEATHERING STEEL  
FL100GS GALVANISED STEEL



All specifications and installation instructions can also be found here:  
[www.straightcurve.info/167](http://www.straightcurve.info/167)

Download here!



MORE INFO & INSTALL GUIDE



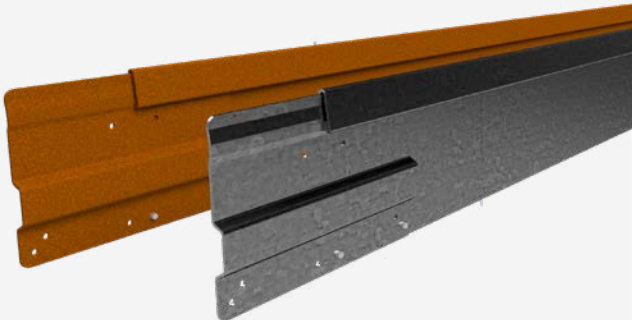




100mm high x 2200mm Straightcurve® Rigid Garden Edging

IDEAL FOR

- ✔ Straight garden paths and straight lawn areas
- ✔ Linear surrounds of feature trees and garden beds
- ✔ Separating areas of stone / woodchips / mulch etc
- ✔ Retrofits and hard ground where trenching is not easy



RL100WS WEATHERING STEEL  
RL100GS GALVANISED STEEL

All specifications and installation instructions can also be found here:  
[www.straightcurve.info/168](http://www.straightcurve.info/168)

Download here!





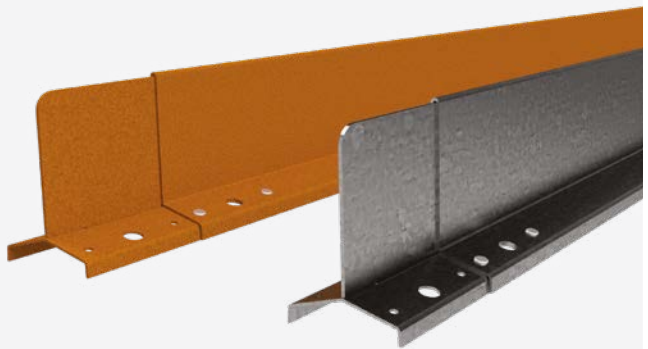
# Garden Edging Range



## 100mm high x 2200mm Straightcurve® Zero-Flex Garden Edging

### IDEAL FOR

- ✔ Designs requiring perfect straight lines that stay true
- ✔ Neat, formal and orderly courtyard gardens
- ✔ Linear tree surrounds and garden beds
- ✔ Discreet Divider between gravels/woodchips/mulch etc
- ✔ Lock in paving or compacted/loose fill paths



HL100WS WEATHERING STEEL  
HL100GS GALVANISED STEEL

All specifications and installation instructions can also be found here:  
[www.straightcurve.info/169](http://www.straightcurve.info/169)

Download here!



MORE INFO & INSTALL GUIDE





straightcurve®

# Raised Garden Beds

*Perfect for!*

- ✓ Raised Garden Beds
- ✓ Path Step Ups & Retaining
- ✓ Lawn edging





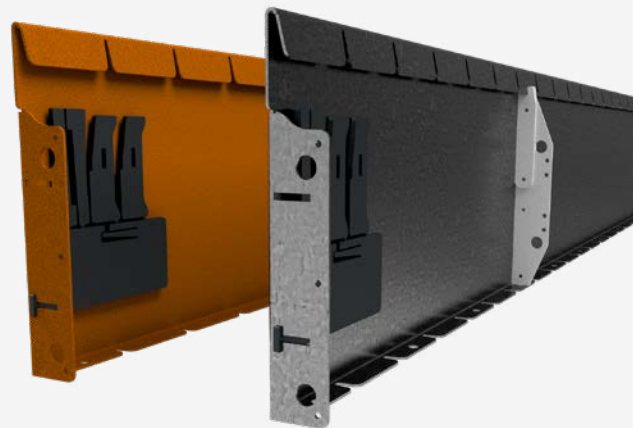
# Raised Garden Beds Range



## 240mm high x 2160mm Straightcurve® Flex Raised Garden Bed Panel

### IDEAL FOR

- ✔ Slightly raised and curving garden bed borders
- ✔ Slightly raised closed shape feature beds
- ✔ Feature tiered lawn areas within a garden
- ✔ Terraces and retaining across gentle slopes
- ✔ Hard surface mounting i.e. rooftops/decking



FL240WS WEATHERING STEEL  
FL240GS GALVANISED STEEL



All specifications and installation  
instructions can also be found here:  
[www.straightcurve.info/170](http://www.straightcurve.info/170)

Download here!



MORE INFO & INSTALL GUIDE







240mm high x 2160mm Straightcurve® Rigid Raised Garden Bed Panel

IDEAL FOR

- ✔ Slightly raised, straight garden bed borders
- ✔ Slightly raised, closed shape feature beds
- ✔ Path steps and retaining across gentle slopes
- ✔ Lawn edges that stand taller or are buried deeper
- ✔ Hard surface mounting i.e. rooftops/decking



RL240WS WEATHERING STEEL  
RL240GS GALVANISED STEEL

All specifications and installation instructions can also be found here:  
[www.straightcurve.info/171](http://www.straightcurve.info/171)

Download here!





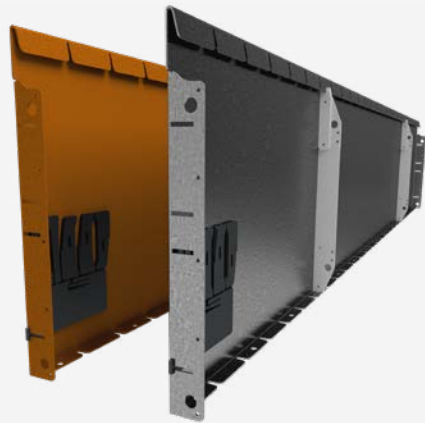
# Raised Garden Beds Range



## 400mm high x 2160mm Straightcurve® Flex Raised Garden Bed Panel

### IDEAL FOR

- ✔ Raised and curving garden bed borders
- ✔ Raised closed shape feature beds and kitchen gardens
- ✔ Feature tiered lawn areas within a garden
- ✔ Terraces and retaining across gentle slopes
- ✔ Hard surface mounting i.e. rooftops/decking



FL400WS WEATHERING STEEL  
FL400GS GALVANISED STEEL



All specifications and installation  
instructions can also be found here:  
[www.straightcurve.info/172](http://www.straightcurve.info/172)

Download here!



MORE INFO & INSTALL GUIDE



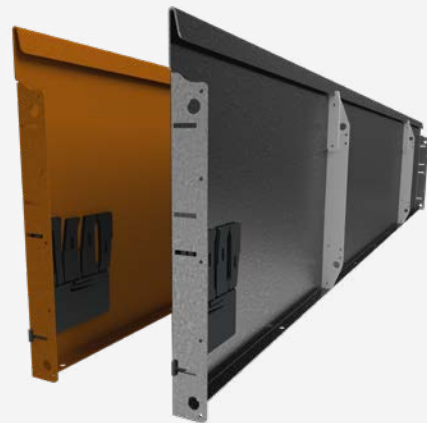




## 400mm high x 2160mm Straightcurve® Rigid Raised Garden Bed Panel

### IDEAL FOR

- ✔ Raised, straight garden bed borders
- ✔ Raised, closed shape feature beds and kitchen gardens
- ✔ Feature tiered lawn areas within a garden
- ✔ Terraces and retaining across gentle slopes
- ✔ Hard surface mounting i.e. rooftops/decking



RL400WS WEATHERING STEEL  
RL400GS GALVANISED STEEL

All specifications and installation  
instructions can also be found here:  
[www.straightcurve.info/173](http://www.straightcurve.info/173)

Download here!



MORE INFO & INSTALL GUIDE





# Raised Garden Beds Range



## 400mm high Straightcurve® Zero-Flex Raised Garden Bed Panel

### IDEAL FOR

- ✔ Designs requiring perfect straight lines and corners
- ✔ Raised, straight-sided feature beds and kitchen gardens
- ✔ Terracing and retaining across gentle slopes
- ✔ Narrow free-standing raised garden beds
- ✔ An extra large custom made planter box look
- ✔ Hard surface mounting i.e. rooftops/decking

### AVAILABLE PANEL LENGTHS

400MM	600MM	800MM	1000MM	1200MM	2000MM
-------	-------	-------	--------	--------	--------

Combine panels to make any size in 200mm increments



FHL400WS WEATHERING STEEL  
FHL400GS GALVANISED STEEL



All specifications and installation instructions can also be found here:  
[www.straightcurve.info/174](http://www.straightcurve.info/174)


Download here!



MORE INFO & INSTALL GUIDE







Smooth, squared top  
with rounded edges

Step up a level!

Catch the eye of passers by  
with a little elevation.



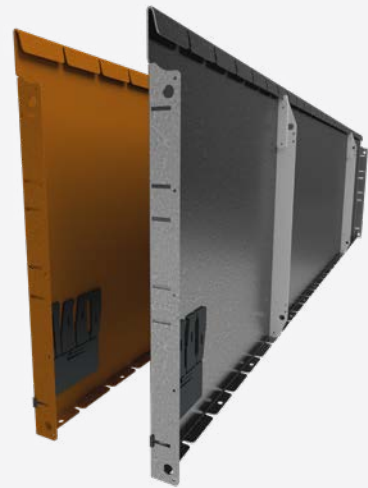
# Raised Garden Beds Range



## 560mm high x 2160mm Straightcurve® Flex Raised Garden Bed Panel

### IDEAL FOR

- ✔ Tall and curving garden bed borders
- ✔ Tall closed shape feature beds and kitchen gardens
- ✔ Feature tiered lawn areas within a garden
- ✔ Terraces and retaining across gentle slopes
- ✔ Hard surface mounting i.e. rooftops/decking



FL560WS WEATHERING STEEL  
FL560GS GALVANISED STEEL



All specifications and installation instructions can also be found here:  
[www.straightcurve.info/194](http://www.straightcurve.info/194)

Download here!



MORE INFO & INSTALL GUIDE



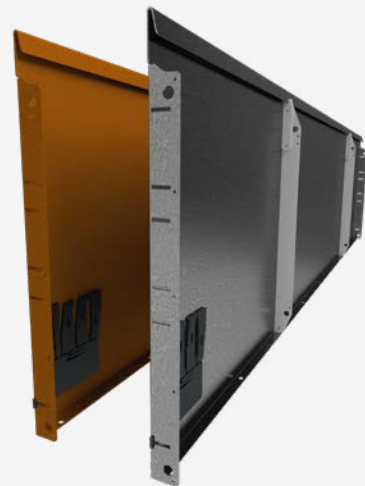




560mm high x 2160mm Straightcurve® Rigid Raised Garden Bed Panel

IDEAL FOR

- ✔ Tall, straight garden bed borders
- ✔ Tall, closed shape feature beds and kitchen gardens
- ✔ Feature tiered lawn areas within a garden
- ✔ Terraces and retaining across gentle slopes
- ✔ Hard surface mounting i.e. rooftops/decking



RL560WS WEATHERING STEEL  
RL560GS GALVANISED STEEL

All specifications and installation instructions can also be found here:  
[www.straightcurve.info/195](http://www.straightcurve.info/195)

Download here!



MORE INFO & INSTALL GUIDE







**Quick to install**  
Designed with time-saving features

welvæ

*Stunning presentation*

Neat and attractive finish, gorgeous seam lines and hidden fixings.



straightcurve®

# Planter Boxes

*Perfect for!*

- ✓ A stylish planter box finish
- ✓ Easy-build custom planters for bespoke designs
- ✓ Something that feels strong and lasts





# Planter Box Range

Hidden fixings with free-standing or bolt down capabilities



## 400mm high Straightcurve® Planter Box Kit or Panel

### IDEAL FOR

- ✔ Square and rectangular planters
- ✔ L and U and other funky shaped planter boxes
- ✔ Custom made planter boxes for particular situations
- ✔ Bases for seats and tables
- ✔ Free standing planter boxes on rooftops or hard surface areas
- ✔ Hard surface mounting i.e. rooftops/decking
- ✔ Difficult to access sites - flat packed for easier delivery

### AVAILABLE PANEL LENGTHS

400MM	600MM	800MM	1000MM	1200MM
-------	-------	-------	--------	--------

Combine panels to make any size in 200mm increments



FHL400WS WEATHERING STEEL  
FHL400GS GALVANISED STEEL

All specifications and installation instructions can also be found here:  
[www.straightcurve.info/198](http://www.straightcurve.info/198)

Download here!

[MORE INFO & INSTALL GUIDE](#)







**Designed for DIY**  
Easy to install with no experience



*Premium quality!*

Suitable for soft, hard  
or concrete surfaces.



# Why use Straightcurve®?



Jaim - Green Horizons Landscape Construction



Alessio - Alessio's Gardens



Jaiden - Deep Green Landscaping



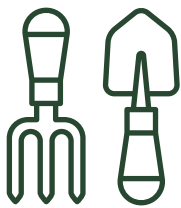
Mirek - Waterwise Landscaping



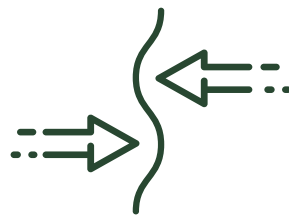
Wanda - Wanda's Gardening & Landscaping



# Landscaper & DIY user benefits



**DESIGNED FOR DIY**



**NATURALLY FLEXIBLE, EASY TO CURVE**



**STRAIGHT LINES STAY TRUE**



**DISCREET, NEAT JOINING**



**QUICK TO INSTALL**



**SMOOTH ROLLED TOP EDGES**

## GREAT BENEFITS

- ✔ Easy and quick installation
- ✔ Each connection is always right
- ✔ Suitable for soft, hard or concrete surfaces
- ✔ Natural looking finish
- ✔ Durable and strong – won't crack, warp or shift later
- ✔ Easy combinations of rigid and flex garden edges
- ✔ Products made for straight lines and curves
- ✔ No need to concrete edges in place
- ✔ No welding required
- ✔ Sold in sets with stakes and connectors.



# Simply Better

**straightcurve**<sup>®</sup>

General Enquiries  
[info@straightcurve.uk](mailto:info@straightcurve.uk)

[www.straightcurve.com](http://www.straightcurve.com)