

straightcurve®

Steel garden edging, retaining & planters

WEATHERING STEEL
10
YEAR
STRUCTURAL INTEGRITY GUARANTEE

GALVANISED STEEL
15
YEAR
STRUCTURAL INTEGRITY GUARANTEE

AUSTRALIAN DESIGNED

AUSTRALIAN OWNED

Simply Better

Create curved lines easily
Notches allow unmatched flexibility



Start your creative journey!

Whether it's off a plan or off the cuff,
it's never been as easy as this. Be bold, be
stylish, be innovative, be playful!
Start your next creative journey here.

Contents

INTRODUCTION

- ⊕ Solution types and finishes 4

IN-GROUND SOLUTIONS

- ⊕ 3" Rigidline™ 8
- ⊕ 3" Flexline™ 9
- ⊕ 4" Rigidline™ 10
- ⊕ 4" Flexline™ 11
- ⊕ 6" Rigidline™ 12
- ⊕ 6" Flexline™ 13
- ⊕ 4" Hardline™ - HEAVY DUTY 14
- ⊕ 6" Hardline™ - HEAVY DUTY 15

ABOVE GROUND SOLUTIONS

- ⊕ 9.5" Rigidline™ 18
- ⊕ 9.5" Flexline™ 19
- ⊕ 15.75" Rigidline™ 20
- ⊕ 15.75" Flexline™ 21
- ⊕ 22" Rigidline™ 22
- ⊕ 22" Flexline™ 23

RAISED PLANTER SOLUTIONS

- ⊕ 15.75" Fixed height retaining & planters 26
- ⊕ 22" Fixed height retaining & planters 27

OUR DIFFERENCE

- ⊕ Why use Straightcurve® 28
- ⊕ Entire Product list 30

Decisions decisions... Straight or curved?

Deciding what you need or simply seeking inspiration? At some point there comes a time to choose if the lines in your garden will be straight or curving. The product range is designed to have solutions for both, so it's helpful to know just what you want!



STRAIGHT

Hardline™ is the heavy duty option for strong straights with a foot to make them sturdy, it's so grounding!

Rigidline™ is suited for firm straight lines as it is more rigid than Flexline™.



CURVED

Use the Flexline™ range for organic and flowing lines. As they flex rather than bend you can make all curves effortlessly by hand on site as you go, it comes naturally!



COMBINATIONS

It's OK to have some of each in a garden too. Our Rigidline™ will join with our Flexline™ of the same height.

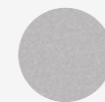
Finish choices

The entire Straightcurve® range is available in a weathering steel or galvanised finish. Perfect for whatever look you are going for!



WEATHERING STEEL

Weathering steel is an alloy that develops a rusty-looking protective patina, giving a natural finish.



GALVANISED STEEL

The galvanised look is for people who prefer a grey/silver finish and is longer lasting.



Natural looking finish!
Superior quality with
smooth rolled top edges

straightcurve®

In-ground solutions

Perfect for!

- ✓ Lawn barriers
- ✓ Pathway edges
- ✓ Separating materials like stone and mulch

Straight lines stay true
Stabilising foot prevents movement



Got to keep them separated!

Use the Hardline™ range for strong straight lines that stay true over time.



Disclaimer: Measurements have been converted from metric and some small variance may therefore apply. Please visit our website for full terms and conditions



3" high x 87" Rigidline™

IDEAL FOR

- ✔ Straight lines and geometric designs
- ✔ Straight garden paths and lawn areas
- ✔ Decorative stone areas
- ✔ Angular tree surrounds
- ✔ Hard soils where trenching is difficult

USE AS

- ✔ Divider between gravels/woodchips/ mulches etc
- ✔ Paving, compacted stone and artificial turf edge
- ✔ Lawn edge for non-invasive grasses



RL075WS WEATHERING STEEL
RL075GS GALVANISED STEEL

Download here!

MORE INFO & INSTALL GUIDE

All specifications and installation instructions can also be found here: www.straightcurve.info/113



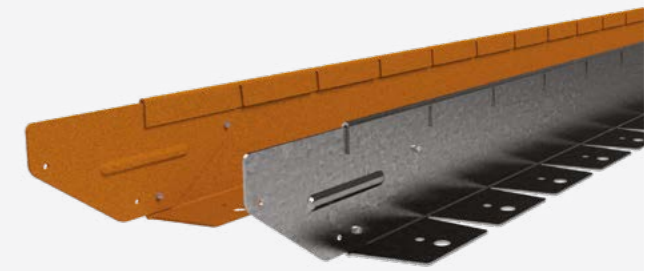
3" high x 87" Flexline™

IDEAL FOR

- ✔ Organic and flowing lines
- ✔ Meandering garden paths
- ✔ Decorative stone areas
- ✔ Creating curved lawn areas
- ✔ Rounded tree surrounds
- ✔ Hard soils where trenching is difficult

USE AS

- ✔ Divider between gravels/woodchips/ mulches etc
- ✔ Paving, compacted stone and artificial turf edge
- ✔ Lawn edge for non-invasive grasses



FL075WS WEATHERING STEEL
FL075GS GALVANISED STEEL

Download here!

MORE INFO & INSTALL GUIDE

All specifications and installation instructions can also be found here: www.straightcurve.info/112

In-ground solutions



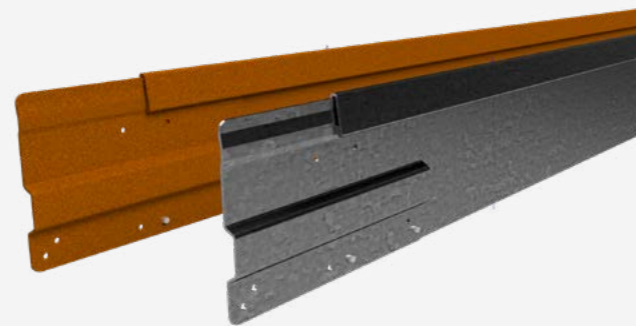
4" high x 87" Rigidline™

IDEAL FOR

- ✔ Straight lines and geometric designs
- ✔ Straight garden paths and lawn areas
- ✔ Decorative stone and mulch areas
- ✔ Hard soils where trenching is difficult
- ✔ In-ground tree surrounds

USE AS

- ✔ Lawn barrier for non-invasive grasses
- ✔ Divider between gravels/woodchips/mulch etc
- ✔ Low feature bed

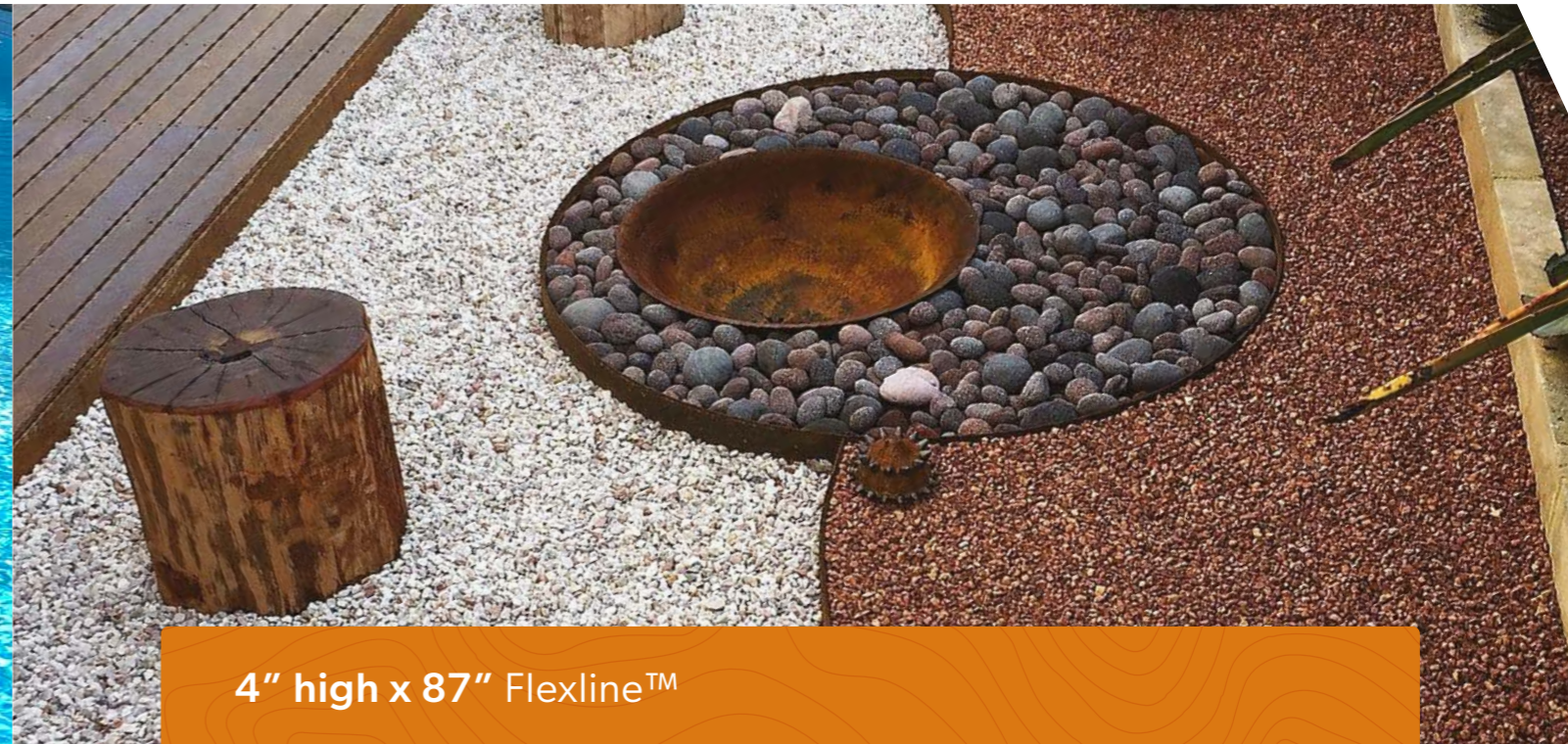


RL100WS WEATHERING STEEL
RL100GS GALVANISED STEEL

All specifications and installation instructions can also be found here:
www.straightcurve.info/115

Download here!

MORE INFO & INSTALL GUIDE



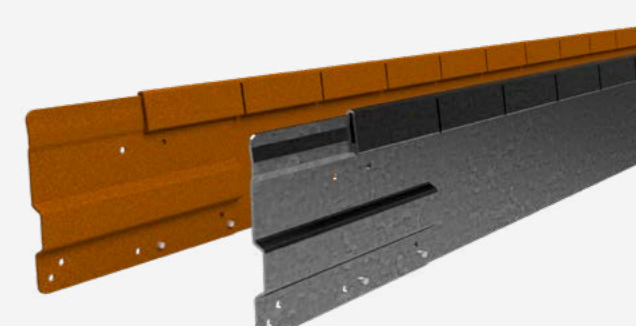
4" high x 87" Flexline™

IDEAL FOR

- ✔ Organic and flowing lines
- ✔ Meandering garden paths
- ✔ Creating curved lawn areas
- ✔ Decorative stone and mulch areas
- ✔ Hard soils where trenching is difficult
- ✔ Gently sloping gardens

USE AS

- ✔ Lawn barrier for non-invasive grasses
- ✔ Divider between gravels/woodchips/mulch etc
- ✔ Low feature bed



FL100WS WEATHERING STEEL
FL100GS GALVANISED STEEL

All specifications and installation instructions can also be found here:
www.straightcurve.info/114

Download here!

MORE INFO & INSTALL GUIDE



In-ground solutions



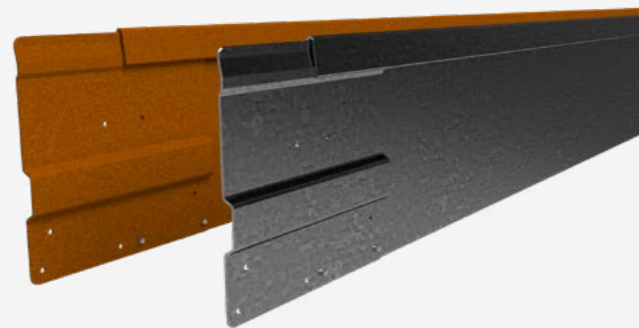
6" high x 87" Rigidline™

IDEAL FOR

- ✔ Straight lines and geometric designs
- ✔ Straight garden paths and lawn areas
- ✔ Decorative stone and mulch areas
- ✔ Slightly raised or In-ground tree surrounds
- ✔ Keeping mulch off paths

USE AS

- ✔ Lawn barrier for invasive grasses
- ✔ Divider between gravels/woodchips/mulch etc
- ✔ Low feature bed



RL150WS WEATHERING STEEL
RL150GS GALVANISED STEEL

All specifications and installation instructions can also be found here:
www.straightcurve.info/117

Download here!

MORE INFO & INSTALL GUIDE



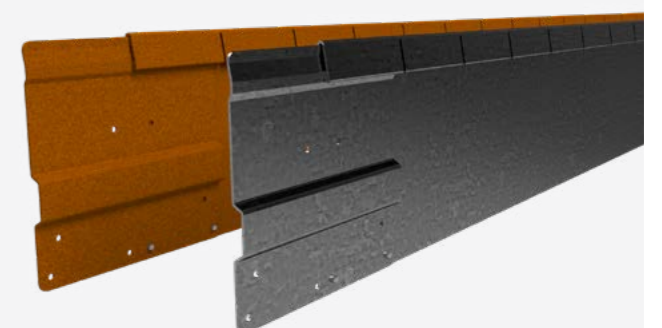
6" high x 87" Flexline™

IDEAL FOR

- ✔ Organic and flowing lines
- ✔ Meandering garden paths
- ✔ Creating curved lawn areas
- ✔ Slightly raised or In-ground tree rings
- ✔ Keeping mulch off paths
- ✔ Gently sloping gardens

USE AS

- ✔ Lawn barrier for invasive grasses
- ✔ Divider between gravels/woodchips/mulch etc
- ✔ Low feature bed



FL150WS WEATHERING STEEL
FL150GS GALVANISED STEEL

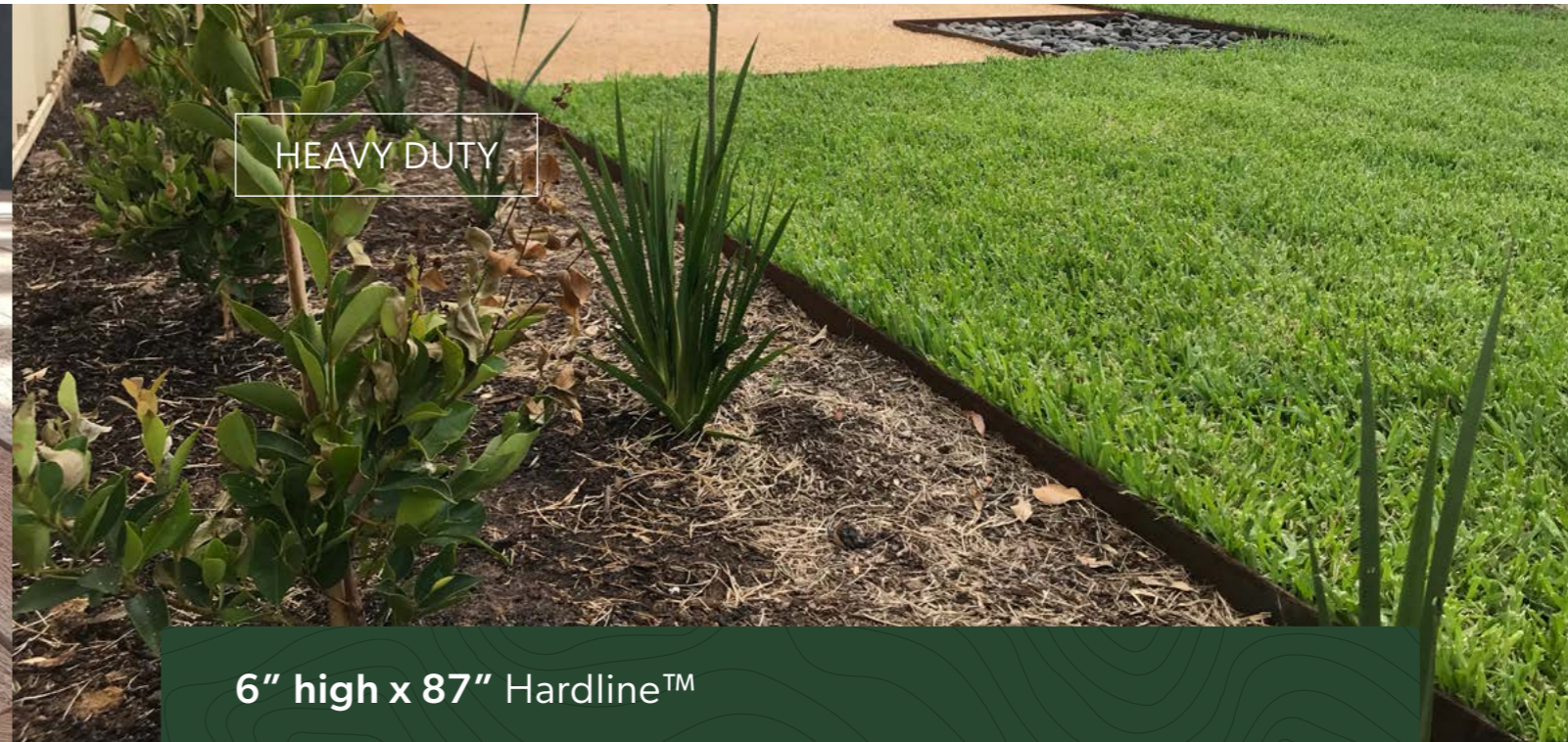
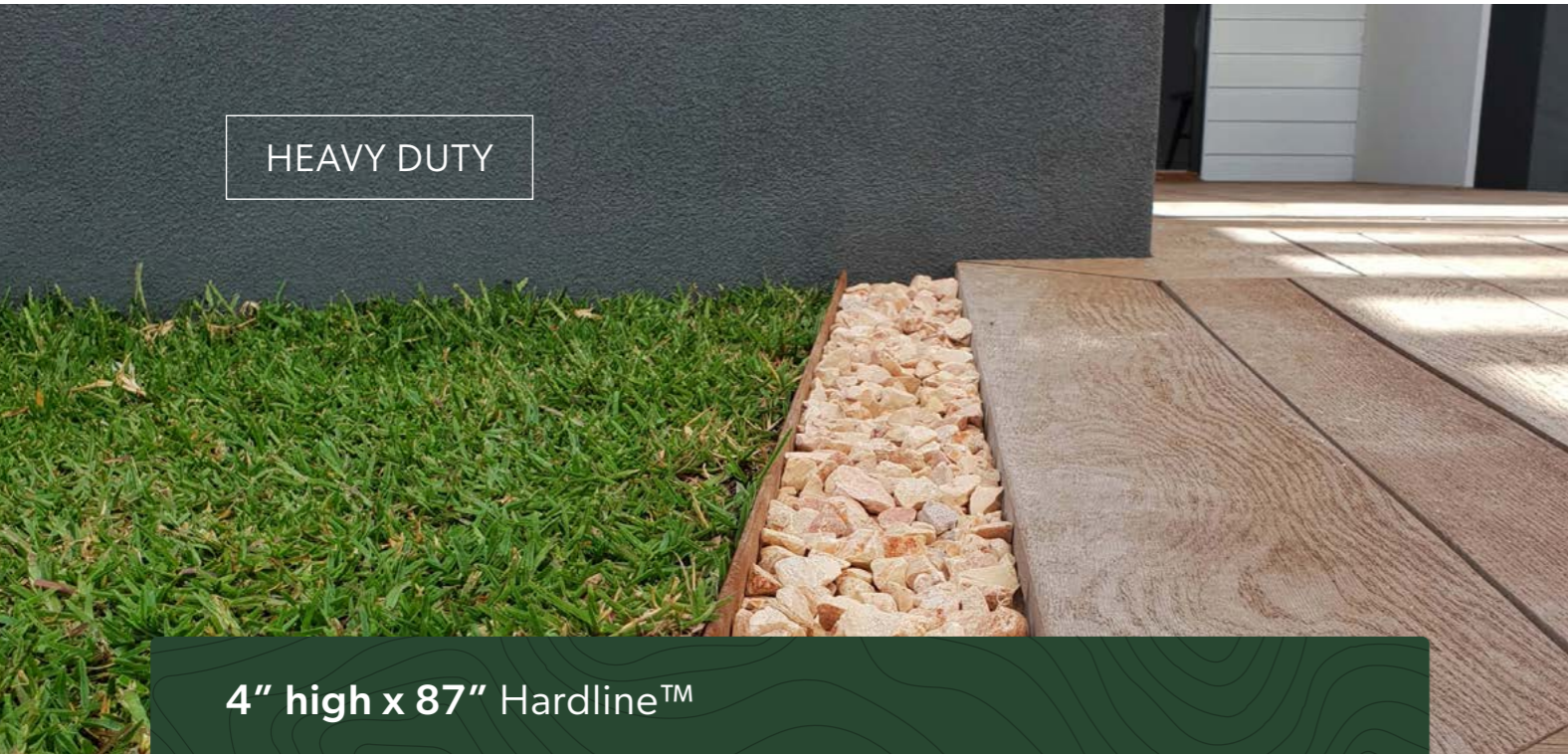
All specifications and installation instructions can also be found here:
www.straightcurve.info/116

Download here!

MORE INFO & INSTALL GUIDE



In-ground solutions



4" high x 87" Hardline™

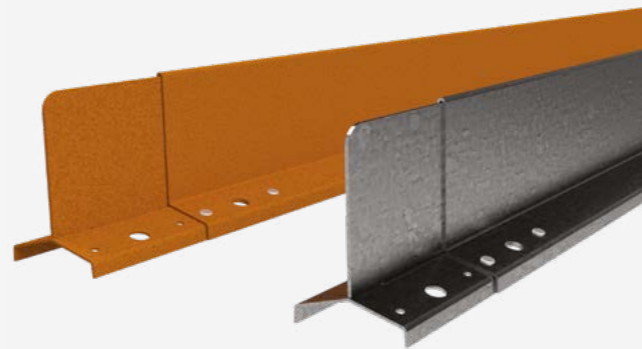
6" high x 87" Hardline™

IDEAL FOR

- ✔ Designs featuring straight lines
- ✔ Small formal courtyard gardens
- ✔ Angular tree surrounds
- ✔ Discreet lines for Perfectionists!

USE AS

- ✔ Lawn barrier for non-invasive grasses
- ✔ Divider between gravels, wood chips, mulch etc
- ✔ Lock in paving or compacted/loose fill paths
- ✔ Low feature bed borders



HL100WS WEATHERING STEEL
HL100GS GALVANISED STEEL

Download here!

MORE INFO & INSTALL GUIDE

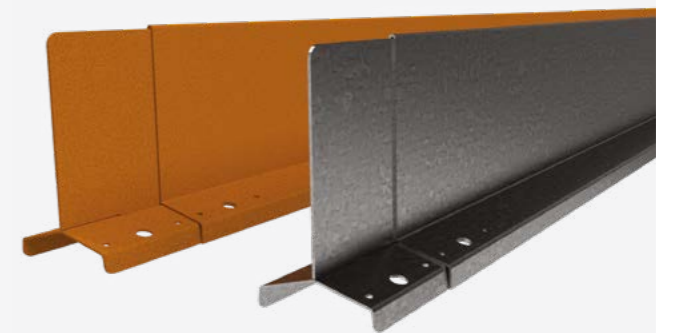
All specifications and installation instructions can also be found here:
www.straightcurve.info/118

IDEAL FOR

- ✔ Designs featuring straight lines
- ✔ Small formal courtyard gardens
- ✔ Angular tree surrounds
- ✔ Showing a little more edge

USE AS

- ✔ Lawn barrier for invasive grasses
- ✔ Divider between gravels, wood chips, mulch etc
- ✔ Lock in paving or compacted/loose fill paths
- ✔ Low feature bed borders



HL150WS WEATHERING STEEL
HL150GS GALVANISED STEEL

Download here!

MORE INFO & INSTALL GUIDE

All specifications and installation instructions can also be found here:
www.straightcurve.info/119

straightcurve®

Above ground solutions

Perfect for!

- ✔ Raised garden beds
- ✔ Steps and multi levels
- ✔ Retaining walls

Designed for DIY
Easy to install with no experience



Premium quality!

Suitable for soft, hard or concrete surfaces.



Disclaimer: Measurements have been converted from metric and some small variance may therefore apply. Please visit our website for full terms and conditions

Above ground solutions



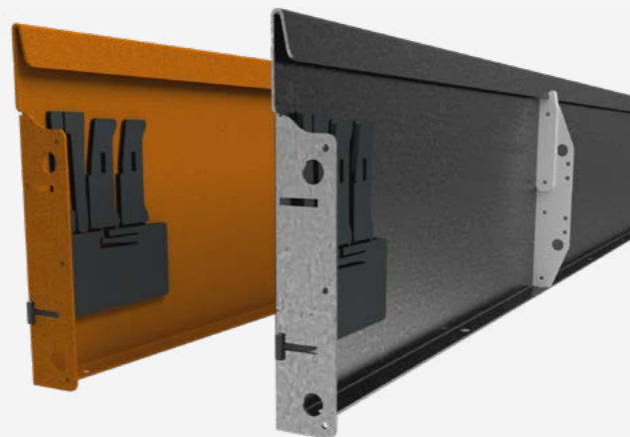
9.5" high x 85" Rigidline™

IDEAL FOR

- ✔ Straight lines and geometric designs
- ✔ Raised, straight-sided feature beds
- ✔ Terracing a gentle slope
- ✔ Creating straight step faces
- ✔ Hard surface mounting i.e. rooftops/decking

USE AS

- ✔ Raised border edging
- ✔ Low retainers and steps
- ✔ High set lawn barrier for invasive grasses



RL240WS WEATHERING STEEL
RL240GS GALVANISED STEEL

Download here!

MORE INFO & INSTALL GUIDE

All specifications and installation instructions can also be found here: www.straightcurve.info/121



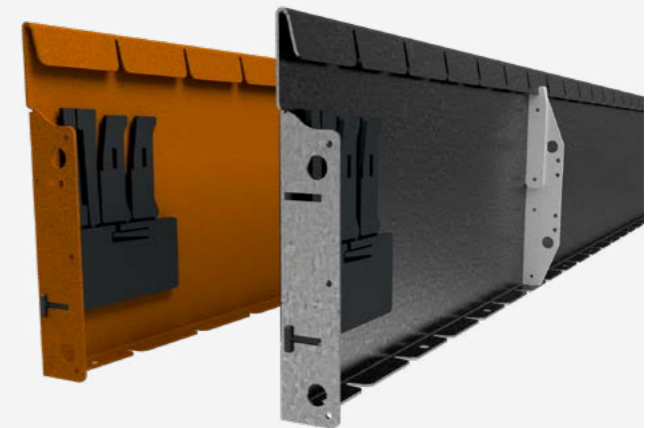
9.5" high x 85" Flexline™

IDEAL FOR

- ✔ Organic and flowing lines
- ✔ Raised, curved feature gardens
- ✔ Terracing a gentle slope
- ✔ Creating curved step faces
- ✔ Hard surface mounting i.e. rooftops/decking

USE AS

- ✔ Raised border edging
- ✔ Low retainers and steps
- ✔ High set lawn barrier for invasive grasses



FL240WS WEATHERING STEEL
FL240GS GALVANISED STEEL

Download here!

MORE INFO & INSTALL GUIDE

All specifications and installation instructions can also be found here: www.straightcurve.info/120

Above ground solutions



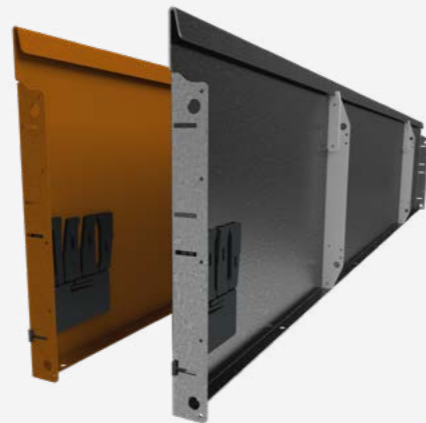
15.75" high x 85" Rigidline™

IDEAL FOR

- ✔ Straight lines and geometric designs
- ✔ Raised, straight-sided feature gardens
- ✔ Kitchen garden beds
- ✔ Straight run terraces/retainers
- ✔ Hard surface mounting i.e. rooftops/decking

USE AS

- ✔ Raised border edging
- ✔ Medium height retainers
- ✔ Closed shape garden beds



RL400WS WEATHERING STEEL
RL400GS GALVANISED STEEL

Download here!

MORE INFO & INSTALL GUIDE

All specifications and installation instructions can also be found here:
www.straightcurve.info/123



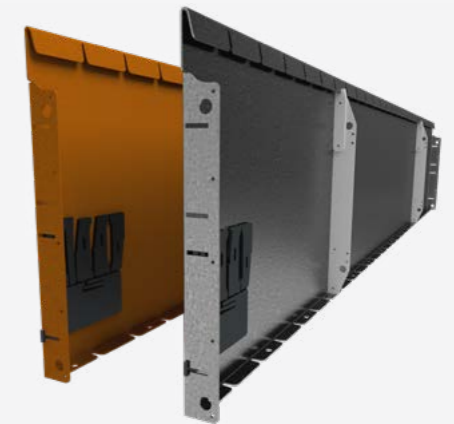
15.75" high x 85" Flexline™

IDEAL FOR

- ✔ Organic and flowing lines
- ✔ Raised, curved feature gardens
- ✔ Kitchen garden beds
- ✔ Curved, sweeping terraces/retainers
- ✔ Hard surface mounting i.e. rooftops/decking

USE AS

- ✔ Raised border edging
- ✔ Medium height retainers
- ✔ Closed shape garden beds



FL400WS WEATHERING STEEL
FL400GS GALVANISED STEEL

Download here!

MORE INFO & INSTALL GUIDE

All specifications and installation instructions can also be found here:
www.straightcurve.info/122

Above ground solutions



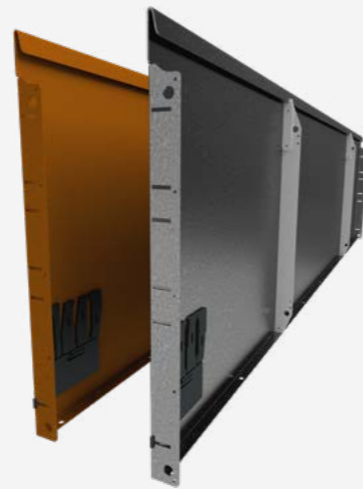
22" high x 85" Rigidline™

IDEAL FOR

- ✔ Straight lines and geometric designs
- ✔ Raised, straight-sided feature gardens
- ✔ Kitchen garden beds
- ✔ Straight run terraces/retainers
- ✔ Hard surface mounting i.e. rooftops/decking

USE AS

- ✔ Raised border edging
- ✔ Medium height retainers
- ✔ Closed shape garden beds



RL560WS WEATHERING STEEL
RL560GS GALVANISED STEEL

All specifications and installation instructions can also be found here:
www.straightcurve.info/125

Download here!

MORE INFO & INSTALL GUIDE



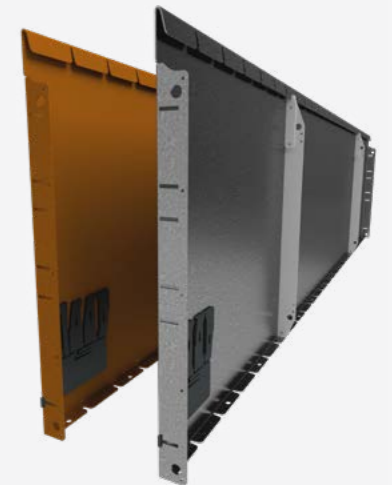
22" high x 85" Flexline™

IDEAL FOR

- ✔ Organic and flowing lines
- ✔ Raised, curved feature gardens
- ✔ Kitchen garden beds
- ✔ Curved, sweeping terraces/retainers
- ✔ Hard surface mounting i.e. rooftops/decking

USE AS

- ✔ Raised border edging
- ✔ Medium height retainers
- ✔ Closed shape garden beds



FL560WS WEATHERING STEEL
FL560GS GALVANISED STEEL

All specifications and installation instructions can also be found here:
www.straightcurve.info/124

Download here!

MORE INFO & INSTALL GUIDE



straightcurve®

Raised planter solutions

Quick to install
Designed with time-saving features



Perfect for!

- ✔ Planter boxes
- ✔ Raised garden beds
- ✔ Straight retaining walls

velvæen

Stunning presentation

Neat and attractive finish
with hidden fixings.



Disclaimer: Measurements have been converted from metric and some small variance may therefore apply. Please visit our website for full terms and conditions

Fixed height planter box

Hidden Fixings with bolt down capabilities.

straightcurve®



15.75" high Fixed height retaining and planters



22" high Fixed height retaining and planters

IDEAL FOR

- ✓ Square/Rectangular free standing beds
- ✓ Retaining walls
- ✓ Long 'garden barrier' beds
- ✓ Hard surface Areas, i.e. patios and rooftops
- ✓ Tables and bench seats (create own top)
- ✓ L and U shaped planter beds

USE AS

- ✓ Raised garden beds and planters
- ✓ Retainers (One wall or Closed Shape)
- ✓ Outdoor furniture bases
- ✓ Storage boxes



AVAILABLE PANEL LENGTHS

15.75"	23.6"	31.5"	39.375"	47.25"	78.75"
--------	-------	-------	---------	--------	--------

Combine panels to make any size in 8" increments

FHL400WS WEATHERING STEEL

All specifications and installation instructions can also be found here: www.straightcurve.info/126

Download here!

MORE INFO & INSTALL GUIDE



IDEAL FOR

- ✓ Square/Rectangular free standing beds
- ✓ Retaining walls
- ✓ Long 'garden barrier' beds
- ✓ Hard surface Areas, i.e. patios and rooftops
- ✓ Tables and bench seats (create own top)
- ✓ L and U shaped planter beds

USE AS

- ✓ Raised garden beds and planters
- ✓ Retainers (One wall or Closed Shape)
- ✓ Outdoor furniture bases
- ✓ Storage boxes



AVAILABLE PANEL LENGTHS

15.75"	23.6"	31.5"	39.375"	47.25"	78.75"
--------	-------	-------	---------	--------	--------

Combine panels to make any size in 8" increments

FHL560WS WEATHERING STEEL

All specifications and installation instructions can also be found here: www.straightcurve.info/127

Download here!

MORE INFO & INSTALL GUIDE



Why use Straightcurve®?



Jaim - Green Horizons Landscape Construction



Alessio - Alessio's Gardens



Jaiden - Deep Green Landscaping

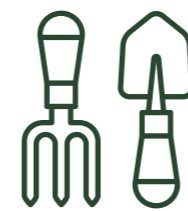


Mirek - Waterwise Landscaping

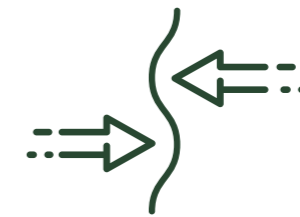


Wanda - Wanda's Gardening & Landscaping

Landscaper & DIY user benefits



DESIGNED FOR DIY



NATURALLY FLEXIBLE, EASY TO CURVE



STRAIGHT LINES STAY TRUE



DISCREET, NEAT JOINING



QUICK TO INSTALL



SMOOTH ROLLED TOP EDGES

GREAT BENEFITS

- ✔ Easy and quick installation
- ✔ Durable and strong – won't crack, warp or shift later
- ✔ No need to concrete edges in place
- ✔ Each connection is always right
- ✔ Easy combinations of rigid and flexible edges.
- ✔ No welding required
- ✔ Suitable for soft, hard or concrete surfaces
- ✔ Products made for straight lines and curves
- ✔ Sold in sets with stakes and connectors.
- ✔ Natural looking finish

IN-GROUND SOLUTIONS								
IMAGE	PREFIX	HEIGHT (inch)	MATERIAL (WS/GS)	LENGTH (S) (inch)	USE AS	IDEAL FOR	ACCESSORIES (NOT INCLUDED)	
	FL	3"	WS / GS	87"	<ul style="list-style-type: none"> Divider between gravels/woodchips/ mulch Paving, compacted stone & artificial turf edge Lawn edge for non-invasive grasses 	<ul style="list-style-type: none"> Organic & flowing lines Meandering garden paths Decorative stone areas Creating curved lawn areas Rounded tree surrounds Hard soils where trenching is difficult 	<ul style="list-style-type: none"> 2 x Tek Screws (12G x 0.6") or 2 x pop rivets (0.2" shaft) 	
	RL	3"	WS / GS	87"	<ul style="list-style-type: none"> Divider between gravels/woodchips/ mulch Paving, compacted stone & artificial turf edge Lawn edge for non-invasive grasses 	<ul style="list-style-type: none"> Straight lines & geometric designs Straight garden paths & lawn areas Decorative stone areas Angular tree surrounds Hard soils where trenching is difficult 	<ul style="list-style-type: none"> 22" Corner piece 2 x Tek Screws (12G x 0.6") or 2 x pop rivets (0.2" shaft) 	
	FL	4"	WS / GS	87"	<ul style="list-style-type: none"> Lawn barrier for non-invasive grasses Divider between gravels/woodchips/mulch Low feature bed 	<ul style="list-style-type: none"> Organic & flowing lines Meandering garden paths Creating curved lawn areas Decorative stone and mulch areas Hard soils where trenching is difficult Gently sloping gardens 	<ul style="list-style-type: none"> 22" Corner piece Hard surface fixing bracket 2 x Tek Screws (12G x 0.6") or 2 x pop rivets (0.2" shaft) 	
	RL	4"	WS / GS	87"	<ul style="list-style-type: none"> Lawn barrier for non-invasive grasses Divider between gravels/woodchips/mulch Low feature bed 	<ul style="list-style-type: none"> Straight lines & geometric designs Straight garden paths & lawn areas Decorative stone & mulch areas Hard soils where trenching is difficult In-ground tree surrounds 	<ul style="list-style-type: none"> 22" Corner piece Hard surface fixing bracket 2 x Tek Screws (12G x 0.6") or 2 x pop rivets (0.2" shaft) 	
	FL	6"	WS / GS	87"	<ul style="list-style-type: none"> Lawn barrier for invasive grasses Divider between gravels/woodchips/ mulch Low feature bed 	<ul style="list-style-type: none"> Organic & flowing lines Meandering garden paths Creating curved lawn areas Slightly raised or In-ground tree rings Keeping mulch off paths Gently sloping gardens 	<ul style="list-style-type: none"> 22" Corner piece Hard surface fixing bracket 2 x Tek Screws (12G x 0.6") or 2 x pop rivets (0.2" shaft) 	
	RL	6"	WS / GS	87"	<ul style="list-style-type: none"> Lawn barrier for invasive grasses Divider between gravels/woodchips/ mulch Low feature bed 	<ul style="list-style-type: none"> Straight lines & geometric designs Straight garden paths & lawn areas Decorative stone & mulch areas Slightly raised or In-ground tree surrounds Keeping mulch off paths 	<ul style="list-style-type: none"> 22" Corner piece Hard surface fixing bracket 2 x Tek Screws (12G x 0.6") or 2 x pop rivets (0.2" shaft) 	
	HL	4"	WS / GS	87"	<ul style="list-style-type: none"> Lawn barrier for non-invasive grasses Divider between gravels, wood chips, mulch Lock in paving or compacted/loose fill paths Low feature bed borders 	<ul style="list-style-type: none"> Designs featuring straight lines Small formal courtyard gardens Angular tree surrounds Discreet lines for Perfectionists! 	<ul style="list-style-type: none"> 22" Corner piece 4 x Tek Screws (12G x 0.6") or 4 x pop rivets (0.2" shaft) 	
	HL	6"	WS / GS	87"	<ul style="list-style-type: none"> Lawn barrier for invasive grasses Divider between gravels, wood chips, mulch Lock in paving or compacted/loose fill paths Low feature bed borders 	<ul style="list-style-type: none"> Designs featuring straight lines Small formal courtyard gardens Angular tree surrounds Showing a little more edge 	<ul style="list-style-type: none"> 22" Corner piece 4 x Tek Screws (12G x 0.6") or 4 x pop rivets (0.2" shaft) 	
ABOVE GROUND SOLUTIONS								
	FL	9.5"	WS / GS	85"	<ul style="list-style-type: none"> Raised border edging Low retainers & steps High set lawn barrier for invasive grasses 	<ul style="list-style-type: none"> Organic & flowing lines Raised, curved feature gardens Terracing a gentle slope Creating curved step faces Hard surfaces i.e. rooftops/decking 	<ul style="list-style-type: none"> Small anchor post (2 x Tek screws 12G x 0.6") Corner piece (arm lengths: 10") Joining sleeve (6 x Tek screws 12G x 0.6") Universal bracing set (tumbuckle/chain/stake) 	
	RL	9.5"	WS / GS	85"	<ul style="list-style-type: none"> Raised border edging Low retainers & steps High set lawn barrier for invasive grasses 	<ul style="list-style-type: none"> Straight lines & geometric designs Raised, straight-sided feature beds Terracing a gentle slope Creating straight step faces Hard surfaces i.e. rooftops/decking 	<ul style="list-style-type: none"> Small anchor post (2 x Tek screws 12G x 0.6") Corner piece (arm lengths: 10") Joining sleeve (6 x Tek screws 12G x 0.6") Universal bracing set (tumbuckle/chain/stake) 	
	FL	15.75"	WS / GS	85"	<ul style="list-style-type: none"> Raised border edging Medium height retainers Closed shape garden beds 	<ul style="list-style-type: none"> Organic & flowing lines Raised, curved feature gardens Kitchen garden beds Curved, sweeping terraces/retainers Hard surfaces i.e. rooftops/decking 	<ul style="list-style-type: none"> Universal bracing set OR Large anchor post (4 x Tek Screws 12G x 0.6") Corner piece (arm lengths: 10") Joining sleeve (8 x Tek Screws 12G x 0.6") 	
	RL	15.75"	WS / GS	85"	<ul style="list-style-type: none"> Raised border edging Medium height retainers Closed shape garden beds 	<ul style="list-style-type: none"> Straight lines & geometric designs Raised, straight-sided feature gardens Kitchen garden beds Straight run terraces/retainers Hard surfaces i.e. rooftops/decking 	<ul style="list-style-type: none"> Universal bracing set OR Large anchor post (4 x Tek Screws 12G x 0.6") Corner piece (arm lengths: 10") Joining sleeve (8 x Tek Screws 12G x 0.6") 	
	FL	22"	WS / GS	85"	<ul style="list-style-type: none"> Raised border edging Medium height retainers Closed shape garden beds 	<ul style="list-style-type: none"> Organic & flowing lines Raised, curved feature gardens Kitchen garden beds Curved, sweeping terraces/retainers Hard surfaces i.e. rooftops/decking 	<ul style="list-style-type: none"> Universal bracing set OR Large anchor post (4 x Tek Screws 12G x 0.6") Corner piece (arm lengths: 10") Joining sleeve (10 x Tek Screws 12G x 0.6") 	
	RL	22"	WS / GS	85"	<ul style="list-style-type: none"> Raised border edging Medium height retainers Closed shape garden beds 	<ul style="list-style-type: none"> Straight lines & geometric designs Raised, straight-sided feature gardens Kitchen garden beds Straight run terraces/retainers Hard surfaces i.e. rooftops/decking 	<ul style="list-style-type: none"> Universal bracing set OR Large anchor post (4 x Tek Screws 12G x 0.6") Corner piece (arm lengths: 10") Joining sleeve (8 x Tek Screws 12G x 0.6") 	
RAISED PLANTERS								
	FHL	15.75"	WS	15.75" 23.6" 31.5" 39.375" 47.25" 78.75"	<ul style="list-style-type: none"> Raised garden beds & planters Retainers (one wall or closed shape) Outdoor furniture bases Storage boxes 	<ul style="list-style-type: none"> Square/rectangular free standing beds Retaining walls Long 'garden barrier' beds Hard surfaces i.e. patios & rooftops Tables & bench seats (create own top) 	<ul style="list-style-type: none"> Straight Join Set (12 x Tek Screws 12G x 0.6") Closed Corner Set (6 x Tek Screws 12G x 0.6") Open Corner Set (8 x Tek Screws 12G x 0.6") Standard crossover bracing strap Universal Bracing Set Large anchor post + Fixing lips (sold separately) (require 6 x Tek Screws 12G x 0.6") 	
	FHL	22"	WS	15.75" 23.6" 31.5" 39.375" 47.25" 78.75"	<ul style="list-style-type: none"> Raised garden beds & planters Retainers (one wall or closed shape) Outdoor furniture bases Storage boxes 	<ul style="list-style-type: none"> Square/rectangular free standing beds Retaining walls Long 'garden barrier' beds Hard surfaces i.e. patios & rooftops Tables & bench seats (create own top) 	<ul style="list-style-type: none"> Straight Join Set (12 x Tek Screws 12G x 0.6") Closed Corner Set (6 x Tek Screws 12G x 0.6") Open Corner Set (8 x Tek Screws 12G x 0.6") Standard crossover bracing strap Universal Bracing Set Large anchor post + Fixing lips (sold separately) (require 6 x Tek Screws 12G x 0.6") 	

FL - Flexible RL - Rigid HL - Super Rigid FHL- Fixed Planter WS = Weathering GS = Galvanised

straightcurve®

American Distributor:

Straightcurve
540-219-1758
info@straightcurve.com

Distributor:

www.straightcurve.com