

straightcurve®

Landscape Professional's Guide to Choosing Straightcurve®

- ✓ A **new** range of steel garden edging, raised garden beds and planter products.
- ✓ Designed for up to **three times quicker** and easier installation
- ✓ Made for a **high-quality, lasting finish**



www.straightcurve.com

Simply Better

Hi, I'm Erin,

I'm the owner of Henderson Garden Supply and National representative for Straightcurve® in the US ...

Straightcurve® is a cleverly designed range of steel garden edging, raised garden bed and planter box products. Straightcurve® installs up to 3 x quicker and easier than more conventional products, whilst delivering a high-quality, lasting finish.

This handy guide will help you quickly decide whether Straightcurve® is right for your business and your customers. If you like what you see, I'd love to hear from you.

Please feel free to call me or send an email so we can get to know each other and I can understand your business and project requirements.

Speak soon and warm regards,

Erin Henderson

☎ (540) 219-1758

✉ info@straightcurve.com



The intention of this guide

We would like to provide everything you need to quickly decide whether our range of cleverly designed products could give your landscaping business a competitive edge.

The information shared here is intended to introduce you to Straightcurve®, it should:

- ☑ Help build your confidence in choosing and using our products
- ☑ Be a handy resource to dip into when you need it
- ☑ Provide interesting facts to share with your team and clients

Team and business advantages

The advantages Straightcurve® can provide to the team members and/or disciplines of a Professional Landscaping Business.



Simply Better: For Sales

Your sales people can promise reduced installation costs, more competitive quotes and better results to win more business using Straightcurve®. **Our products install quicker and easier so you can be more competitive and deliver more projects in any given period.**

Simply Better: For Designs

Your designer will have more freedom to play with form and function when your installation team is using Straightcurve®. **Our products are cleverly designed to stay either perfectly straight or evenly curved.**

Simply Better: For Installation

Your installers will enjoy a product that works with them, adapts to on-site conditions, and achieves more satisfying results, more efficiently and consistently using Straightcurve®. **Our products are designed for easy installation and to work around on-site challenges.**

Simply Better: For Clients

Your clients will appreciate a finished result that looks exceptional at handover and helps them retain and maintain that look for many years to come using Straightcurve®. **Our products are made from high-quality steel designed to maintain structural integrity.**

Simply Better: For Marketing

Your marketers will love producing case studies and promotions when you deliver a project that makes your workmanship stand out using Straightcurve®. **Our products make it easier to deliver consistently exceptional looking results worthy of showcasing.**



Create curved lines easily
Notches allow unmatched flexibility

Start your creative journey!

Whether it's off a plan or off the cuff,
it's never been as easy as this. Be bold, be
stylish, be innovative, be playful!
Start your next creative journey here.

Straight or curved

At some point there comes a time to choose if a garden will require straight or curving lines. The product range is designed to have solutions for both and the ability to combine the two.



STRAIGHT

Straightcurve Zero-Flex products present different profiles that are all suited to making lasting, perfectly straight unmovable lines courtesy of their continuous top fold and grounding feet.

The Straightcurve Rigid range are suited for firm straight lines, with these garden edging lines also capable of slight curves that offer plenty of strength to hold the gentlest curve.



CURVED

Use the Flex range of garden edging and raised garden beds for organic and flowing lines. As they flex, rather than bend, you can make all curves effortlessly by hand on site as you go, it comes naturally!

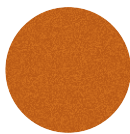


COMBINATIONS

It's OK to have some of each in a garden too. Our Rigid and Flex garden edging and raised garden beds are join compatible. In fact the raised garden beds of different heights are join compatible too - and if you're working on a sloping block, that's more than just a fun fact!

Steel finish

All our products are available in Weathering steel and Galvanised steel.



Weathering steel
(aka corten)

The manufacturing process of weathering steel will leave the surface in a dark, almost black state. The black 'finish' is an oxide layer that forms during the hot rolling process. The weathering process sees this layer break down first before the desired protective patina layer can establish. The darkness and strength of the oxide layer varies, and this can account for inconsistent rust colouration at first, before the even patina is achieved. The patina develops naturally with periods of wet and dry, and both phases are key for its steady formation.



Galvanised Steel

Galvanised steel is the longest-lasting steel finish on the market. Galvanised steel will outlast mild or weathering steel hands down, making it an excellent choice for durability. The protective coating of galvanised steel provides an enduring edge in more aggressive coastal and urban environments. Galvanised steel garden edging and raised garden beds present a clean, striking, contemporary aesthetic in both commercial landscape and domestic garden settings.

Our range in summary

Straightcurve® Garden Edging

From our garden edging range you will find options across the heights of 3", 4" and 6" that are suited to defining the lines in your garden, whether that's edging a lawn or a path or anything requiring separation. These edges are buried with the degree of edge left visible determined by the requirements of the project



Straightcurve® Raised Garden Beds

The Raised Garden Bed range features heights of 9.5", 15.75" and 22". Our options allow attractive height variations with different styles of raised garden bed borders. The creation of feature raised garden beds, terrace-style retaining and step-ups all become possible. These edges require no burying due to the lock-in feet, which can see a considerable saving in the amount of steel used in a project. Bracing solutions are also designed with both strength and ease of installation in mind.



Straightcurve® Planter Boxes

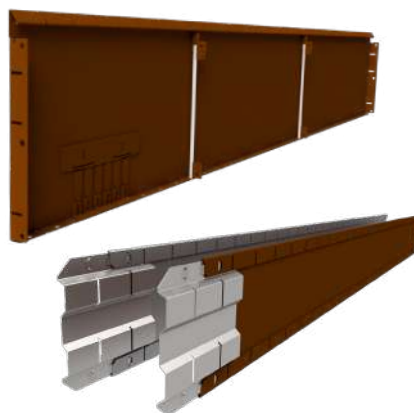
Simply better for... square/rectangular free standing planter boxes and more irregular bespoke creations that may be larger in size and feature additional corners. Ideal to make particular geometric shapes such as L or U-shaped Planter Boxes. Great for longer Planter Boxes and working with seat inserts or canterlevers.



Straightcurve Styles

Straightcurve Flex

Naturally flexible so not requiring skillful bending or pre-shaping - just flex into the curve required. This is significant as steel edging has always required bending or pre rolling. Use Straightcurve Flex for smoothly curving edging applications that hold position once installed.



- ✔ Our Flex Garden Edging is available in 3", 4" and 6" heights
- ✔ Our Flex Raised Garden Beds are available in 9.5", 15.75" and 22" heights
- ✔ Bracing systems for tall edge styles to suit retaining
- ✔ Hard Surface Fixing options and Pre-made Corners available
- ✔ Option to make your own neat corners with an angle grinder

Straightcurve Rigid

Rigid by nature due to continuous fold at top and in the feet (where present) these edges hold a stronger, firmer line. Use Straightcurve Rigid for creating straight or slightly curving lines. See different curve capabilities for garden edging vs raised garden beds.



- ✔ Our Rigid Garden Edging is available in 3", 4" and 6" heights
- ✔ Our Rigid Raised Garden Beds are available in 9.5", 15.75" and 22" heights
- ✔ For any straight and gently curved lines (garden edging), these are what we recommend
- ✔ Bracing systems for tall edge styles to suit retaining
- ✔ Hard Surface Fixing sets and Pre-made Corners available
- ✔ Option to make your own neat corners with an angle grinder

Straightcurve Zero-Flex™

With the strengthening design features of Zero-Flex these lines will give the best possible result when striving for perfect straight runs. All Zero-Flex products come with a grounding foot and folded top profile to prevent flexing. The Zero Flex 4" and 6" actually have the grounding foot on both sides making them super stable even before installation!

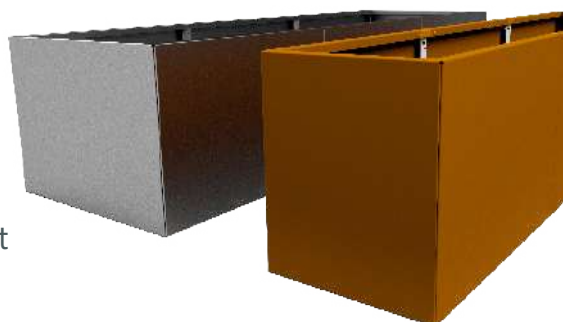
Use Straightcurve Zero-Flex for lasting, perfectly straight unmovable lines.



- ✔ Our Zero-Flex Garden Edging is available in 3", 4" and 6" heights
- ✔ Our Zero-Flex Raised Garden Beds are available in 9.5", 15.75" and 22" heights
- ✔ Our Zero-Flex range is made for holding a true straight line
- ✔ Hard Surface Fixing options and Pre-made Corners available
- ✔ Option to make your own neat corners with an angle grinder (garden edging only)
- ✔ Fixing spikes for quick, strong and secure lockdown

Straightcurve Planter Boxes

Our Zero-Flex range is also great for making both standard planter boxes or bespoke kit style creations to meet a particular design layout. They offer a high-quality and stylish look that is robust and durable with a boxy top edge that accentuates the attractive design details.



- ✔ A range that's designed for square & rectangular Planter boxes at a height of 9.5", 15.75" and 22"
- ✔ Being easy to transit assists with accessibility to difficult sites
- ✔ Constructed on-site with just a hammer
- ✔ Free standing with optional bolt-down capability



Straight lines stay true
Stabilising foot prevents movement

Keep them separated!

Use the Zero-Flex garden edging™
4" edge for strong straight lines that
stay true over time.

How other edging options compare

If you're considering switching from an alternative product or method to using Straightcurve® Steel Garden Edging, it's good to compare and contrast. This section is here to help you understand the differences we've observed between our products and others available to Professional Landscapers and their customers.

Aluminium edging

Some companies offer aluminium edges as an alternative to steel - whilst not directly competitive, it's worth making the comparison.

Our key differences are:

- ✔ Strength and durability, aluminium is soft by comparison & buckles easily
 - ✔ A greater quality result is likely
 - ✔ More subtle presence/look in a landscape, dull silver
 - ✔ Fewer accessories and fiddly parts for a basic edge install
-

Plastic Edging Varieties

Plastic is very vulnerable to shifting and more difficult to install. They rarely provide a quality finish though composite styles are improving the standard.

Our key differences are:

- ✔ Joining systems much better/more discreet and lasting
 - ✔ We never have visible pegging systems like some plastic edge styles
 - ✔ Plastics expand/contract with temperature variation, this means they actually lift out of the ground and are vulnerable to buckling
 - ✔ Install experience is much easier, plastic often comes in a coil with a memory
-

Fixed Peg Edging

Pegs can only be placed in predetermined positions, making them problematic for installing around obstacles.

Our key differences are:

- ✔ Our peg system works independent of the connector plates
 - ✔ Install method allows more easy adjustment on the job
 - ✔ Our pegs can be placed anywhere along the edge to avoid obstacles
 - ✔ Our tree rings can be made on site making them easier to transport and more size fluid
 - ✔ Our pegs lock in safely and won't move or protrude above the edge
-



Pre-attached Peg Edging

The way these systems work with pre-attached pegs is quite user unfriendly by comparison with Straightcurve®

Our key differences are:

- ✔ Optional peg positioning, fixed on pegs may hit in-ground obstacles
- ✔ We peg in place last allowing a thorough view before commitment, pre-attached peg edging loses this advantage
- ✔ Longer lengths more suited to professionals or larger jobs
- ✔ Install time much reduced
- ✔ Easier for curves due to ease of maneuverability

Alternative approaches

Other methods of edging include the use of wooden boards and sleepers, brick or block works, concrete and composite plastic boarding. Each alternate method has its advantages and disadvantages. As a summary, here are the key points of difference to note with Straightcurve®

Our key points of difference

- ✔ Flexibility of our edging makes smooth curves easy
- ✔ Connections self-align and are permanent - no chance of shifting later
- ✔ Peg positions are not fixed so more install friendly
- ✔ Sold in sets with connector plates attached
- ✔ Fast Install times and less tools required

Unique selling points

Here are some of the features and benefits of the Straightcurve® range. Having an understanding of our product USPs will help when you're considering using our products, when you're comparing them to alternatives, or when you're recommending them to your customers.



All our solutions require minimal tools/skills



The Straightcurve® range can be used for hard ground and softer ground installations



Straightcurve® products come in sets wherever possible to minimize accessories needed



Modular Straightcurve products come flat packed for easier transportation and site access



Straightcurve® products are designed for both curving or straight edge use, or a combination of the two with compatible connections



Installation of Straightcurve® edging is much faster and easier than traditional methods, because there is no welding, clamping, pre-shaping or drilling involved



Straightcurve® products are long lasting and durable



Our Raised Garden Beds are thicker at 2mm



Straightcurve® Raised Garden Beds have bracing systems for retaining without having to bury 1/3 of the product, as you do with traditional retaining systems



All Straightcurve® edges have rounded tops rather than sharp metal, so are not only good looking, but child & pet friendly too



Summary of product design features

You will find our products have many design features focussed on making installation easier and making our products look amazing. Below we have listed some of the design features that make Straightcurve products *Simply Better!*

Garden Edging

-
- ✔ Pre-attached connector plate and screwless connection makes joining quick and precise
 - ✔ Easy hammer in twisted nail fixing system for super quick installation in any soil type
 - ✔ Rolled-over top edge is aesthetically pleasing and child & pet friendly
 - ✔ Double-sided foot of the Zero-flex 4" /6" edges make for dead-straight edging that stays true over time
 - ✔ The notches in the folded top of the Flex range make for easy flexing into desired shape.
-

Raised Garden Beds

-
- ✔ Bracket, wedge and slider connection system requires just a hammer to join panels
 - ✔ The resulting join seams are discrete, smooth and attractive
 - ✔ The bottom edge does not need to be buried due to pinning of feet
 - ✔ Bracing system and fixing spikes allows use for low retaining without burying or deep footings
 - ✔ Boxy top edge of the Zero-Flex makes for dead-straight panels that stay true over time
-

Planter Boxes

-
- ✔ Panels available in a range of different sizes with customisable configurations possible too
 - ✔ Free standing with optional bolt-down capability
 - ✔ Constructed on-site with just a hammer
-



Did you know?

Some fun and interesting facts to share about Straightcurve®



We have a blog on our website all about weathering steel aka Corten



The rusty patina is what protects our weathered steel edges, it's their protective coating!



We designed an edge for perfectly straight lines; we call it Straightcurve Zero-Flex



Our goal is to offer the best solution, which may not always be our products, until we innovate more!



Our flexible lines can make rings, for instance around trees (Diameter sensitive)



Our products come in weathering and galvanised steel, and launching soon in powdercoated!



Our flexible steel edge was the first to easily flex, avoiding kinking (the biggest challenge with all other metal edging products) instead of being bent or pre-rolled



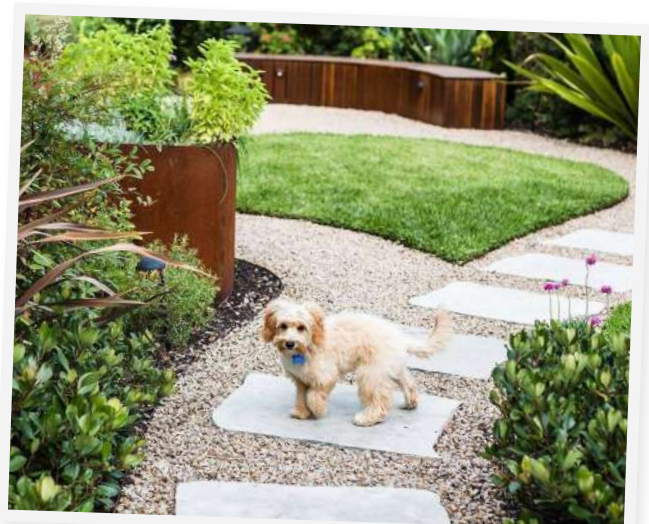
Our range can be split into Garden Edging, Raised Garden Beds and Planter Boxes. They are designed for purpose. Just look at the seams of the taller products!

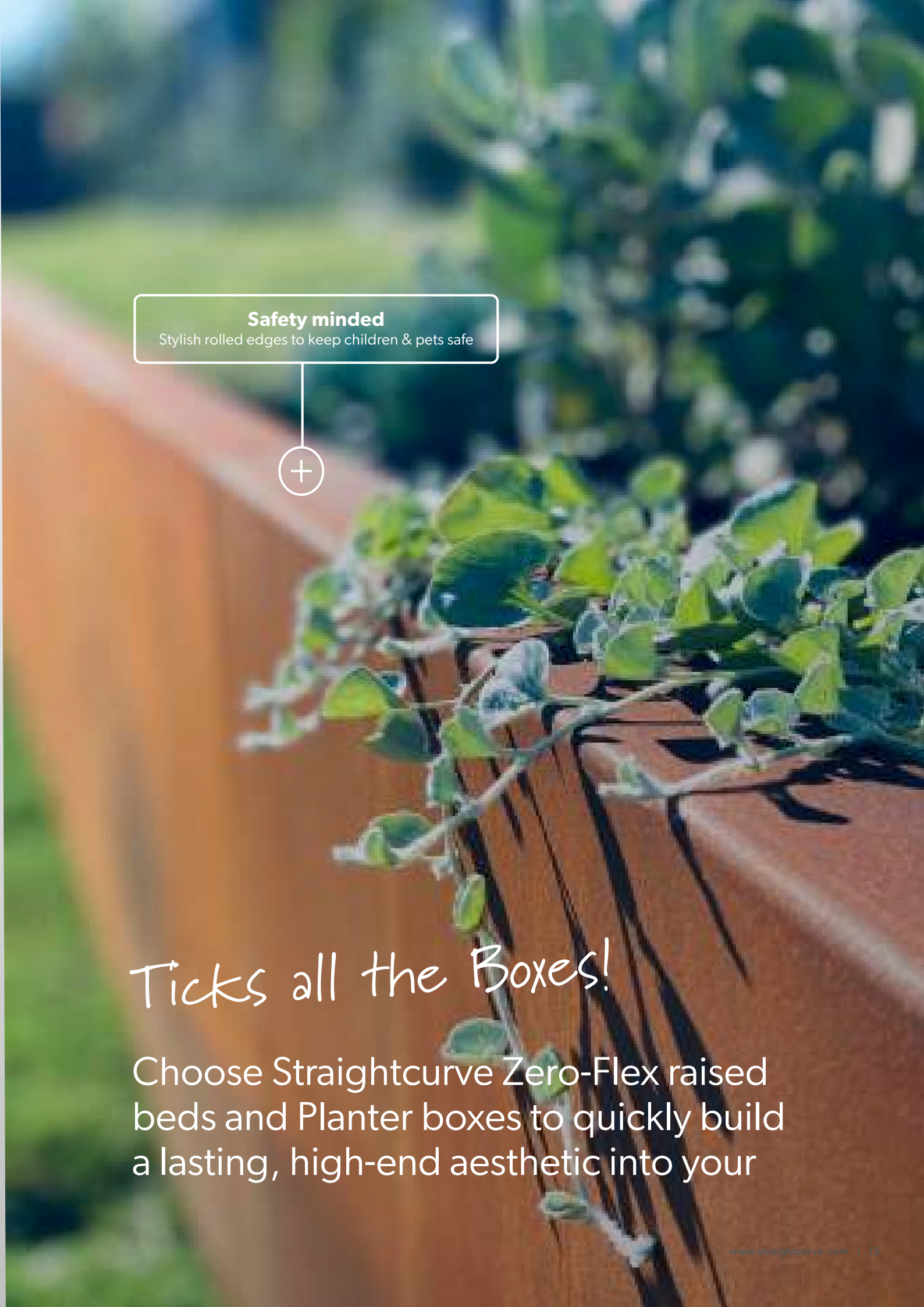


We design for DIY



The most common use of our 4"/6" flex is as a lawn barrier





Safety minded

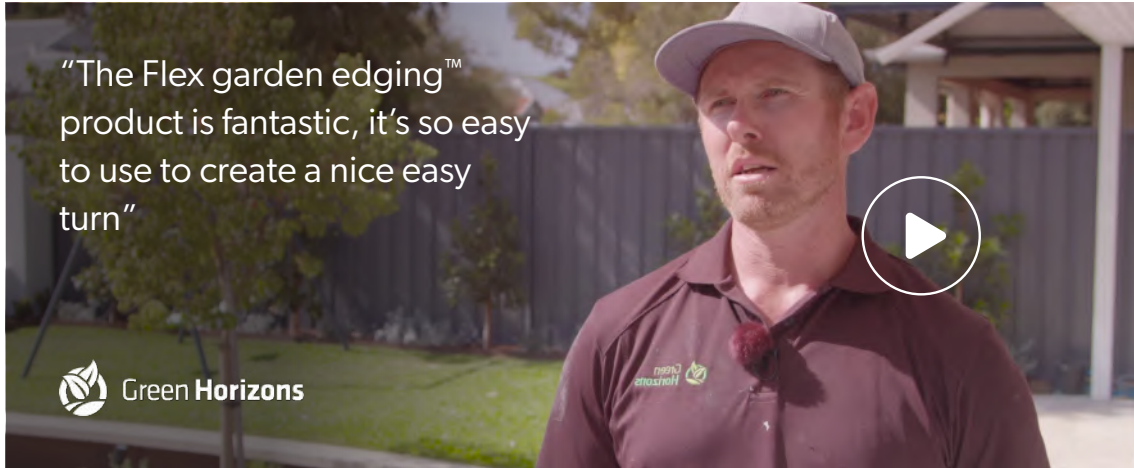
Stylish rolled edges to keep children & pets safe



Ticks all the Boxes!

Choose Straightcurve Zero-Flex raised beds and Planter boxes to quickly build a lasting, high-end aesthetic into your

What professionals say



What our customers say



A great product I keep recommending to my clients



"A great product I keep recommending to my clients. Easy to order and customer service is great if you have any questions about the products. Putting the products together is straight forward and the end result is always a happy client, as well as myself!" - Nicholas

The team at Straightcurve have been fantastic



"The team at Straightcurve have been fantastic to deal with. With their technical knowledge, the product was easy to work with and the results are fantastic. After seeing our finished product, our friends have been quick to get in touch with Straightcurve and have had similar experiences, can't recommend the product enough as a point of difference in your backyard." **Jonathon**

Great company and product



"Dan, Tarrant and the straightcurve team are always a pleasure to work with. From initial communication until delivery the process is always fast and stress free. Straightcurve is a very easy product to work with, it produces fantastic results which look amazing. Would highly recommend for either the DIYer or Landscape professional." - Scott

Easy to use & DIY friendly



"LOVE THIS PRODUCT! Used it in many many places throughout my sloped garden - to create steps, terracing and planting pockets, as well as garden edging. Very user friendly and easy to use."-Chloe

Such a great company and product



"Such a great company and product. Very easy to use, well priced and the customer service has been very helpful and prompt. I look forward to using again on the next job ." - Michael

Video showcase

Gardening on a slope

Contractor: Chloe Thomson of Bean There Dug That
Project Type: Sloping back garden steps and terracing
Products used: Straightcurve® 6" Flex garden edging +
Straightcurve® 9.5" and 15.75" Flex raised garden bed panels

Australian Horticulturalist and media presenter Chloe Thomson takes us on a walkthrough of her sloping garden. Chloe shows how she used several Straightcurve Flex garden edging products to solve some steep challenges whilst explaining some of the key product design characteristics that make them preferable to alternative edging methods.

Join me, Chloe, as I walk you through my backyard garden - let me inspire you with some ideas on how to garden on a slope. Don't let a sloping garden hold you back - there are many many ways you can still have a beautiful and productive garden.

We moved into this property 6 years ago - at the time there wasn't a single plant in the garden - apart from some big gum trees. But during the past 6 years we've slowly transformed the space into various "rooms" and spaces we use daily. The "very backyard" section was our most recent creation and account for about a quarter of our overall house block.

To tackle the 33% sloping backyard we used a very clever product called 'Straightcurve®' - it's a rusted steel edging that can be bent into any shape. So we've used it to create terrace style steps up to a small but lush green lawn.

[Click here to check out the full episode.](#)



Chloe Thomson - Bean there Dug that

Horticulturist and digital content creator, gardening video presenter and producer.

Check it out on Youtube

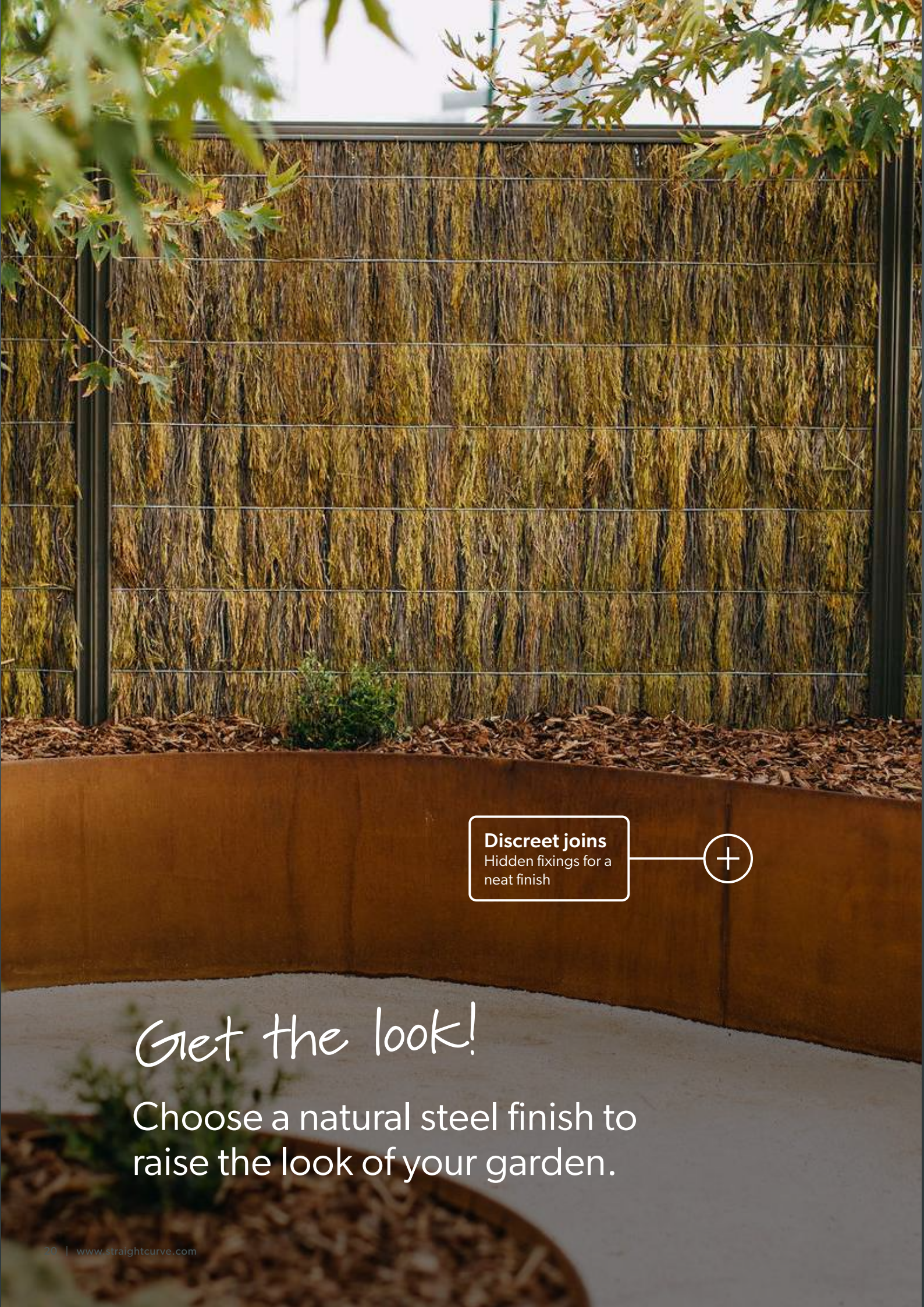
[Click here →](#)

Here's a video walk through from Horticulturalist and media personality Chloe Thomson talking about her sloping garden.



Check it out on Youtube

[Click here →](#)



Discreet joins
Hidden fixings for a
neat finish



Get the look!

Choose a natural steel finish to
raise the look of your garden.

Frequently asked questions

WEATHERING STEEL EXPLAINED

1. Are Weathering Steel and Corten Steel the same thing?
2. How long does it last, if it's rusting? What would be its Lifespan?
3. I love this orange colour (pointing to a bright show garden edge), Can I buy it like that?
4. Will it stain my pavers as it rusts, I've seen that happen with Steel?
5. I saw a friend's steel edge flaking, but he said it was Weathering Steel. Should that be happening?

INSTALLATION RELATED

6. How does it go working up a slope?
7. How far in should I dig the bottom of the 22" edge if retaining a slope?
8. Do any of your products work on a rooftop?
9. Can I join the flexible edge with the Zero-Flex garden edging edge?
10. How do I make a corner with your edging?
11. Can I join different height edges together?

CONFIDENCE & USE

12. Can you roll it for us? What is the tightest radius you can do?
13. Am I able to reuse your edging if I want to change the design later?
14. Will this be strong enough for a driveway edge?
15. Are those braces as strong as a post set in a concrete footing?

OBSERVATIONS & THOUGHTS

16. Doesn't the steel get hot and cook the plants?
17. Isn't wood a more natural look than steel?
18. I can weld up some flatbar myself that would be just as sturdy, why would I pay for that?
19. Can you make custom edge orders, I'd like one 300mm tall?

WEATHERING STEEL EXPLAINED

1. Are Weathering Steel and Corten Steel the same thing?

Weathering steels were first developed by US Steel Corporation back in the 1930s. They were looking for a steel alloy for their ore carrying hopper carts they would use to transfer the iron ore and coal to the furnace. They soon became popular for bridges and other large outside structures for the look and maintenance advantages. The stable rust layer on the surface, brought on by time in the weather, eliminated the need for painting. That's a significant time saving when it comes to bridges!

2. How long does it last if it's rusting? What would be its Lifespan?

Weathering Steel rusts by developing a fine 'patina' layer on its surface, which inhibits further rusting and so increases the lifespan of this steel. That said, there are many variables that can determine actual lifespan. Because of its chemical composition, Weathering Steel exhibits increased resistance to atmospheric corrosion compared to other steel. The corrosion retarding effect of the patina on the surface is produced by the particular distribution and concentration of alloying elements in it. The patina develops and regenerates continuously when subjected to the influence of the weather to maintain a protective coat.

Another way to put this is by way of comparison. Normal steel develops rust that is porous with tiny pores in the surface that the eye can't see. This rust does not seal the steel surface, the rust process therefore never stops and so, tends to flake. Whereas with Weathering steel, the patina produced is much less porous.

The rust 'patina' develops under conditions of alternate wetting and drying. To ensure a stable patina develops, this natural cycle is key and the process should never be rushed with salts or acids. The rusting occurs on surfaces where oxygen is freely available. This means that in the ground, rusting happens very slowly due to low oxygen availability. When buried, weathering steel offers no advantage compared to mild steel.

In terms of the lifespan of Weathering Steel garden edging, local conditions such as humidity, salt (soil salinity), acid (soil acidity), soil density (oxygen availability) and sulfur content will affect this. Proximity to salt water is another factor that speeds oxidation up. Under ideal circumstances the weathering steel used in garden edging will last for many decades (maybe even 100yrs!) but in bad conditions lifespan is uncertain. As an extra tip, you can also improve the lifespan of your edging by painting or applying bitumen to the back before backfilling when using taller steel panels for retaining.

3. I love this orange colour (pointing to a bright show garden edge), Can I buy it like that?

The colour of Weathering Steel alters with time in the elements. We've explained why this happens – it is an evolving look! At first it will appear dark grey. It will gradually shift through shades of orange, reddish brown, brown to almost black over the years when it's in a garden. The Weathering Steel edging featured in Show Gardens are typically in the early stages so can have a unique vibrancy and brightness about them. It is possible to fix the colour at a certain stage by applying a sealer coat when you're most happy with the colour. Bear in mind that re-coating is required depending on the coating used and your local conditions.

WEATHERING STEEL EXPLAINED

4. Will it stain my pavers as it rusts, I've seen that happen with Steel?

This can occur in the early stages of rusting but can be avoided with care. The worst cases of this you will see involve mild steel because the rusting carries on unabated. With weathering steel this should only happen when first developing a patina or if rushed artificially (sped up) to achieve the desired patina.

Regular misting or using a damp cloth to wet the steel without runoff is one way you may avoid this happening so much but if it's a sensitive install and that isn't doable, you can pre-rust the edging before installing to have a stable early phase patina there already. There are also rust solution products available that assist patina development as opposed to accelerating the rusting of the product itself such as occurs when salts or acids are used.

5. I saw a friend's steel edge flaking, but he said it was Weathering Steel. Should that be happening?

This can occur where the soil has rested against it and subsided later, because buried steel behaves as mild steel and does not develop a protective patina. The exposure of initially buried portions of the edge is the issue, so an easy solution there is to add back the fill to the level it was initially at to slow the process of rusting. That done, it will still be structurally sound and work beautifully as a lawn barrier for plenty of time to come.

Note: rust is 7x thicker than its original. 2mm of steel will turn into 14mm of rust! That means 0.3mm of rust comes off in 2.1mm thick flakes. Basically, it looks worse than it is. It doesn't disappear (unless flakes break off) and will still have strength to it, it's just very brittle. As a lawn barrier it still works just fine.

INSTALLATION RELATED

6. How does it go working up a slope?

The flexible edges work really well across a slope and handle slight inclines. The notches actually mean they can give a little laterally too so this means the top edge line can look unaffected but there may be some tilt beneath ground when traversing the slope. Sometimes you can advise they design step ups, so the steep areas are bordered with feature poles, large rocks or the use of our taller edging disappearing into the ground to blend with the incline.

Zero-Flex garden edging is the exception, it needs a level base, the base can be inclined but has to be smooth. Cutting a portion away at one end of the edge where it joins the next to allow an obtuse angle at the intersection is sometimes done to work up or down an incline with Zero-Flex garden edging.

7. How far do I dig the bottom of the 22" edge in if retaining a slope?

You don't need to because the feet are pinned down with twisted nails. In loose sand conditions these will need to be spot concreted in though along with the bracing anchors.

8. Do any of your products work on a rooftop?

All of them can! The presence of a foot system for most of the range mean that they can be fixed down or secured in a workable manner adapted for the surface requirements. The garden edging lines without feet can be used with their hard surface fixing brackets on rooftop installls. We've had some experience in this field now, so feel free to reach out for a further advice on using our products on rooftop gardens.

9. Can I join the Flex Garden Edging with the Rigid Garden Edging?

That's easy because the Flex and Rigid edges are join compatible, they match up exactly.

If you wanted to join the Flex to our Zero Flex, use an angle grinder to modify the connector plate or the joining edge so they can slot together. In that situation, the self tapping Tek screws are drilled in from the side to complete the join. The top edge profiles are not exactly the same, but pretty close to it!

10. How do I make a corner with your edging?

Well we do have premade ones, so you can choose to use those. Should you prefer to make your own, which can simplify the ordering/planning experience, you will need to apply your angle grinder skills. This way you can create a continuous corner where it is needed in the length.

Refer to our videos on how to do this for each product, as while it is essentially about creating a fold line and space to bend into, it does vary for the different products we have. Note that the taller products take more skill and force to effect, so for those, premade corners are recommended as a first option.

11. Can I join different height edges together?

This is most relevant for the Raised Garden Beds when faced with working up a slope. And yes, we do have join slots that align across all Flex or Rigid different height panels (9.5", 15.75" and 22") so that a continuous top edge occurs when they are joined together.

In practice this means, on the lower part of the slope the Raised Garden Bed run may need taller panels with a greater edge face visible due to the slope falling away, with panels of lesser height required further up the bank. It takes some careful planning, but can look very effective, adding volume and height to a bed while reducing the amount of steel used in the project overall.

12. Can you roll it for us? What is the tightest radius you can do?

We do offer prefabricated rings in diameters of 800mm; These come in 4 parts that you connect together to form a circle. Our Straightcurve Flex Garden Edging and Raised Garden Bed range also allows rings and tight curves of a known minimum radius to be achieved on site. This is a big benefit because pre-rolling is costly and takes time. For our Flex Raised Garden Beds the smallest you can do is a 1.37m diameter ring and is made by connecting two lengths. This is done with care using a ratchet strap to flex it in, we certainly recommend watching the video of this on the products pages to best advise on the method. The recommended curvature radius is 69cm for open ended runs. The Flex Garden Edging can make a tighter circle with a radius of 35cm by shaping one length into a circle which is a popular way to make small tree rings. This is a stressed circle though, in practice it is easier and smoother to use 1.5m lengths as a minimum for tree rings.

13. Am I able to reuse your edging if I want to change the design later?

This is not easily done (better off just getting it right first go!)

You would find the weathering steel binds with the soil as it rusts, effectively thickening and bonding the spikes and joining plates to the edge. This means removal won't be possible after sometime in situ. You will have more luck moving galvanised edging for a longer period after installation.

14. Will this be strong enough for a driveway edge?

Possibly, but it depends how it is done, which edge is used and the wear it will be subjected to. There is a blog on our website that answers this in detail. Our Zero-Flex garden edging product is the strongest option for edging driveways and the key is to install with durable fill below and on either side, and very little of the edge left above the surface... but see the blog for more info.

15. Are those braces as strong as a post set in a concrete footing?

The answer is yes, they have been engineered to be much stronger than required. The same considerations apply regarding the use of concrete footing support where necessary. In hard ground situations, the bracing system is much more efficient to install than the support posts. Sometimes though, this comes down to personal preference and whether the landscaper can see past the traditional methods that to their eye may appear more robust.

OBSERVATIONS & THOUGHTS

16. Doesn't the steel get hot and cook the plants?

The answer is no, and you can explain that the steel isn't a very good heat conductor, so while yes it gets hot in the sun, it doesn't transfer well to the soil. Where this circumstance is seemingly observed the likely explanation is a poor watering regime for the soil and plants, so the stress is not because of the steel edge.

Plants will also shade the steel where they overhang, they're not silly! We see plenty of pictures on Instagram of plants cascading over corten steel edging.

17. Isn't wood a more natural look than steel?

Yes maybe, that's really what we call personal preference. Many people choose weathering steel because they say it matches up well with what's in their garden. Wood is very susceptible to rot, shifting and deformation over time, so that is another consideration.

18. I can weld up some flatbar myself that would be just as sturdy, why would I pay for that?

That is absolutely true and many approach steel edging this way and get beautiful results. We recognise their skill, and offer an alternative designed to make it easier for them if they want to give it a go.

We will always be happy to present the benefits of our new approach, and at the same time, we can learn from their experiences, so having a chat is usually a win win situation!

19. Can you make custom edge orders, I'd like one 12" tall?

Our business model is all about the mass production of quality solutions. We try to cover most bases with our range and provide materials to guide designers and specifiers toward working with what we have immediately available. To answer the question, we never say never, so you can always bring it to us and see, but adapting to what we have is the quickest and preferred route.

That said, we've never been inclined to stand still and we do have some exciting new ideas always on our horizon. If you're the kind of person who likes to be the first to try something new and lead rather than wait for a trend, reach out and let's discuss the prospect of you becoming one of our early adopters for what is coming!

straightcurve[®]

General Enquiries
info@straightcurve.com

www.straightcurve.com